



Kolej  
Pengkajian Seni Kreatif



# ECO-CENTRIC 1.0

INTERNATIONAL CULTURAL EXCHANGE  
THROUGH SUSTAINABLE ART

"Sustainability is not a choice, it's a necessity."  
- Bill Clinton

# CONTENT

## Copyright 2023

All rights reserved. No part of this publication may be produced or transmitted in any form or by any means, electronic or mechanical, including photography, recording, or any information storage and retrieval system, without prior consent from the publisher

This publication is published in conjunction with the ECO-Centric 1.0: International Cultural Exchange through Sustainable Art collaboration with Universitas PGRI Mahadewa Indonesia (UPMI) Bali and the College of Creative Arts, Universiti Teknologi MARA Shah Alam Malaysia.

ISBN: 978-629-98470-0-7

Publisher  
College of Creative Arts  
Universiti Teknologi MARA Shah Alam

Printer  
Unit Percetakan  
College of Creative Arts  
Universiti Teknologi MARA Shah Alam

The College of Creative Arts would like to thank all committee members and all participants who helped this exhibition and publication a success.

Advisor  
Dr Faradiba Liana Naser

Editor  
Dr. Hanif Khairi  
Siti Umairah Zainul Idham

Concept & Design  
Prof Madya Suhaimi Tohid  
En. Mohd Fazli Othman  
Muhammad Faris Fazulhisham  
Amirul Aiman Mohd Zaim  
Nabila Syahidah Hamdan

Text  
En. Noor Ashraf Noor Othman  
En. Rahman Rosman  
En. Abdul Hakkam Hafiz Abdain

<b>1</b>	<b>FOREWORD</b>
<b>9</b>	<b>INTRODUCTION</b>
	<b>LECTURERS'</b>
<b>11</b>	<b>COMMENTARY</b>
	<b>INSTALLATION</b>
<b>28</b>	<b>ARTWORK</b>

<b>ART TALK</b>	<b>32</b>
<b>WORKSHOP</b>	<b>36</b>
<b>EXHIBITION</b>	<b>47</b>
<b>STUDENTS'</b>	
<b>ARTWORKS</b>	<b>60</b>
<b>LIST OF</b>	
<b>PARTICIPANTS</b>	<b>124</b>

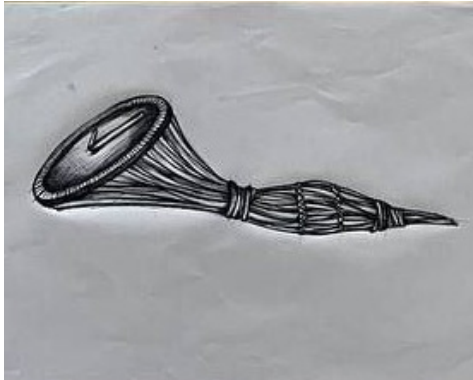
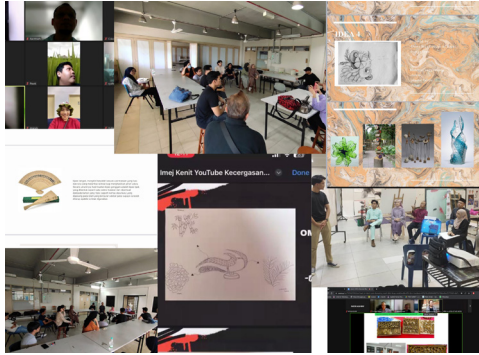


**NUR IMAN ALEESA MOHD ALI**

DEPARTMENT OF CONTEMPORARY METAL DESIGN

2022748537

## SKETCHES AND IDEAS



## ARTWORK AND DESCRIPTION



### **'DWI LOKA**

Mix media  
65 cm x 17 cm x 20 cm  
2023

The conceptual artwork 'Dwi Loka' depicts two traditional activities from Malaysia and Bali, Indonesia. The Malaysian game is known as "Pukul Berapa Datuk Harimau," while the Bali game is known as "Megoak-Goakan." Both games have gameplay similarities. The artwork ensures sustainability by employing bamboo, rattan, and raffia rope. The 'Dwi Loka' artwork was created using bamboo and rattan. Both bamboo and rattan are adaptable materials that have been utilised in a variety of crafts and paintings. Rattan is derived from calameae trees, which are predominantly found in forests and are used to construct fences. In the meantime, bamboo has been revered in many cultures and utilised for centuries in a variety of crafts. Both materials are eco-friendly and can be used to create stunning and durable artworks.