

Preliminary Analysis on the Aura of Female Before and After Performing Ablution (Wudu') by using Resonant Field Imaging (RFI)

Noradilah Alias, Ros Shilawani S. Abdul Kadir, Husna Abdul Rahman

Faculty of Electrical Engineering
Universiti Teknologi MARA
Shah Alam, Selangor, MALAYSIA
noradilahalias@gmail.com

Abstract— This technical paper presents an analysis on the aura of human body before and after performing ablation by using Resonant Field Imaging (RFI) system. The objectives are to analyze the aura of human body before and after performing ablation and analyze whether performing ablation can give good effect to human body. The measurement was taken from 30 female samples around 2 minutes before and after performing ablation. The data collected was analyzed by translating into the color of aura with different score. The result show that 67% of the sample does improve of human body aura after performing ablation. The analysis by region also shows that *excellent* and *good* category does improve. Based on the result presented, it can be concluded that the human body aura does improve significantly by performing ablation.

Keywords: Resonant Field Imaging (RFI), Ablution (wudu'), Aura

I. INTRODUCTION

Performing ablation or wudu' is the Muslim procedure for preparing before their prayers. Ablution is starting with intentions (niya/niat) to do ablutions, a Muslim says, "Bismillahi arrahmani ar-rahimi," washes hands 3 times, rinses mouth, sniffs water into nostrils and expels it, washes face, arms to elbows. Rub his wet hand through hair, touch his ears, wash his feet. Sand and dust can be used if water is not available, excess is beaten off after striking dust, and goes through the motion of washing[11].

Over all, ablation also has an exercising effect on all the muscles involved in its movement, which are thus being stimulated five times a day or even more according to repetition. Islam also stress about cleanliness and the best way with perform ablation. Cleanliness is the pathway to health and strength. Cleanliness and pleasant appearance are of characteristics which allow relationships to strengthen amongst people. The normal human being will try to avoid people who are unkempt Islam[11].

II. LITERATURE REVIEW

Aura is the electromagnetic energy field that exist around the human body, plants and animals. The aura have can be translated into colors that affect the development of mental, emotional, physical and spiritual. Each of this color gives the different meaning about the emotion and physical [1].

Muslim performs ablation before their prayers. In general, Muslim believes that ablation is the way to achieve cleanliness and to become closer to God. The way in which ablation is performed has been handed down since the beginning of Islam as shown by Prophet Muhammad [5]. Performing ablation give benefits from medical and spiritual aspect. It is well known that medically, with washing ourselves, our body can contain less the germs and dust. Spiritually, when our body is clean we become pure.

RFI is an electromagnetic feedback and imaging process. The data collection is measured in frequency which is entered to the RFI software, translated into the color frequencies. The RFI system with a specially tuned antenna will measure the frequency in megahertz (MHz) around the body at various points and distances [2].

III. PROBLEM STATEMENT

This project analyzes the aura of human body before and after performing ablation. Every human body has its own type of aura. The aura come from the energy radiating from human and can be effected by external conditions; which in this project is by performing ablation. Ablution concern is cleanliness. Hence, the human aura is expected to improve after performing ablation.

IV. METHODOLOGY

Figure 1 shows that the flow chart of the scope of work for this project. First step, the data frequencies at several point of human body is collected by using RFI counter. After that, all the data had been transferred into RFI software and was analyzed.

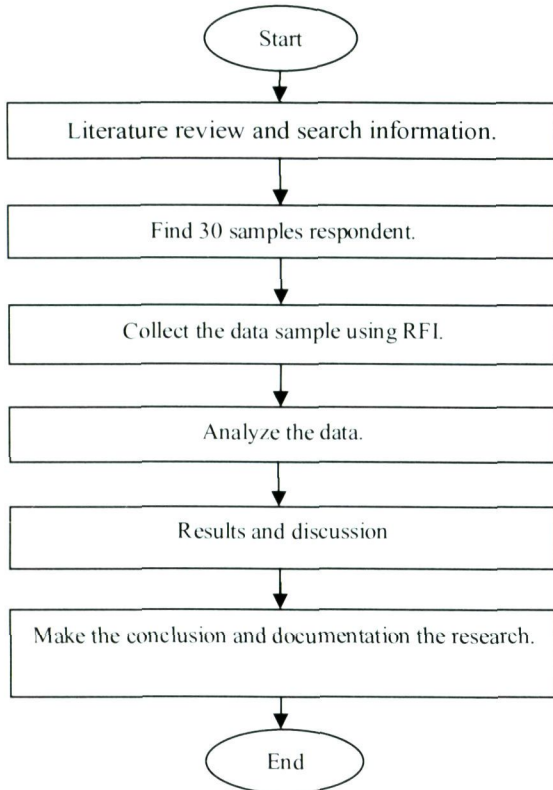


Figure 1: Flow chart of the research

Table 1 shows the experiment design for the research. The data was collected around 2 minutes before and after performing ablation.

Table 1: Experiment Design

RFI Reading ←2 minutes→	Perform Ablution ←5 minutes→	RFI Reading ←2 minutes→
-------------------------------	------------------------------------	-------------------------------

Data collection is taken from 30 samples, the age of the respondent from 18 years to 25 years old, confined to female respondents. Then, the data will be collected around 2 minutes before and after performing ablation (wudu') and

the measure of the aura will be taken by using RFI counter as shown in Figure 2.

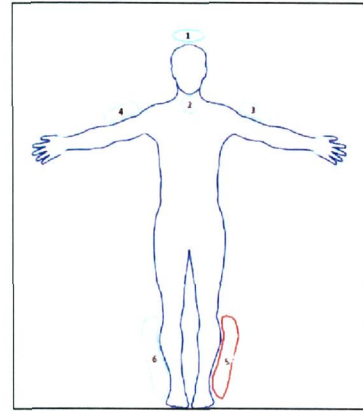


Figure 2: Six point region of the body to be measured

The analysis considers all of the six point region from 30 respondents, then the measurement of frequency data was analyzed with 15 distinguishable colors and interpretation. Then it was translated into Energy Field Score as shown in Table 2.

Table 2: Energy Field Score

Category	Score	Color
Excellent	5	Gold, Silver
Good	4	White, Orchid, Cyan
Satisfactory	3	Rose, Purple, Blue
	2	Orange, Yellow, Green, Navy
Unsatisfactory	1	Burgundy, Black
	0	Red

The Energy Field Score consist excellent, good, satisfactory and unsatisfactory category with their own score.

V. RESULTS AND DISCUSSION

This following data was obtained from the point measurement per 30 respondents. This analysis data is divided into two parts of analysis which are:

- i. Data Analysis for each region
- ii. Data Analysis on Energy Field Score for each respondent

Table 3: Data Reading Frequency Measured before Perform Ablution

SAMPLE	READING BEFORE					
	R1	R2	R3	R4	R5	R6
1	101.302	107.836	94.303	93.652	106.381	101.408
2	100.820	95.590	93.590	94.780	117.600	122.390
3	94.012	96.984	107.810	102.510	104.230	111.520
4	98.139	106.181	107.044	95.494	106.054	115.472
5	93.777	93.928	94.162	93.599	119.039	116.575
6	93.817	93.880	129.296	93.739	95.057	94.465
7	114.278	128.238	93.929	93.784	125.195	128.699
8	107.419	125.868	99.839	93.798	120.986	125.524
9	105.204	105.006	97.127	93.604	116.416	112.894
10	96.209	95.306	102.258	93.693	114.773	113.665
11	93.209	93.630	93.640	93.670	123.970	125.720
12	94.490	94.280	119.940	94.430	123.490	115.130
13	93.600	93.820	103.850	96.830	129.850	125.400
14	96.150	93.380	95.940	119.610	127.230	121.282
15	95.060	95.690	103.710	105.740	105.340	128.050
16	102.990	129.674	102.422	106.569	124.549	120.788
17	95.741	106.652	107.547	118.914	98.296	114.577
18	98.822	117.867	93.575	93.874	128.272	131.688
19	95.894	96.104	95.807	99.809	115.793	127.128
20	103.662	117.413	104.458	116.158	132.589	131.882
21	103.657	108.710	105.243	92.250	125.490	116.140
22	101.778	102.800	104.451	103.449	123.945	117.635
23	103.077	108.992	98.683	104.667	125.980	118.888
24	93.512	95.850	83.840	62.953	62.968	68.078
25	51.772	74.608	66.402	101.570	66.377	61.789
26	96.660	93.660	96.083	98.839	52.082	60.549
27	98.764	63.640	44.431	47.090	34.099	39.900
28	107.171	116.524	112.785	107.666	59.707	57.519
29	88.129	94.139	110.661	94.250	126.970	123.424
30	93.890	94.099	95.307	95.322	121.409	117.759

Table 3 and Table 4 determined the reading of RFI data collection at six points of region which were the Top of Head point, Throat point, Left Arm point, Right Arm point, Left Leg point and Right Leg point for 30 respondents.

A. Data Analysis for each Region

This analysis considers all six point measurement per 30 sample. Figure 5 until Figure 10 shows the analysis data of point measurement related to the color category.

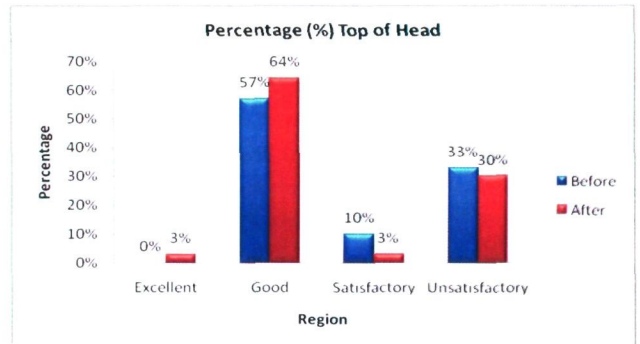


Figure 5: Percentage for top of head

For the top of the head region as shown in Figure 5, 3% of the respondent increased at the *excellent* category after perform their ablation. Respondent with *good* category increase from 57% to 64%. However, *satisfactory* level decreased by 3% and *unsatisfactory* category also decreased from 33% to 30% after performing ablation.

Table 4: Data Reading Frequency Measured after Perform Ablution

SAMPLE	READING AFTER					
	R1	R2	R3	R4	R5	R6
1	94.568	94.647	93.622	93.606	96.920	96.842
2	97.120	93.860	93.800	93.580	109.620	120.230
3	94.997	96.437	98.125	94.742	105.902	105.793
4	94.885	102.259	111.688	100.102	114.669	118.118
5	94.500	94.180	93.610	93.600	116.633	110.905
6	107.451	118.492	130.724	97.008	121.227	93.856
7	120.455	131.754	94.534	94.405	126.842	128.762
8	107.402	127.116	98.221	95.800	120.624	127.235
9	98.178	113.678	106.354	93.699	113.947	106.643
10	97.211	103.767	93.984	94.163	93.892	95.517
11	94.480	94.250	103.010	93.640	124.380	128.620
12	93.630	93.600	107.130	102.200	127.870	129.090
13	94.580	96.890	92.570	104.060	129.500	128.890
14	125.140	127.250	97.570	97.620	124.640	126.340
15	98.210	100.480	102.050	99.960	128.700	128.090
16	112.817	128.663	99.855	109.732	129.926	131.782
17	105.894	107.989	103.087	123.536	130.992	129.350
18	94.088	102.489	94.598	107.827	114.030	115.967
19	94.241	99.552	96.626	98.495	123.635	127.869
20	107.669	125.542	108.609	104.384	130.961	131.006
21	104.702	112.136	99.356	105.446	121.629	112.233
22	100.444	105.380	103.988	104.433	119.822	114.615
23	102.296	107.058	98.927	102.181	122.954	112.478
24	94.339	93.675	72.733	78.270	56.326	57.395
25	94.431	93.537	95.051	95.418	58.844	52.777
26	94.651	93.633	46.983	43.935	53.824	57.964
27	95.944	95.777	119.639	125.132	84.550	80.072
28	108.906	109.983	122.062	124.291	56.566	59.621
29	102.345	98.456	100.237	101.530	127.720	124.138
30	94.531	93.400	98.358	96.389	109.305	110.701

Legend:

- R1 = Top of head
- R2 = Throat
- R3 = Left Arm
- R4 = Right Arm
- R5 = Left leg
- R6 = Right Leg

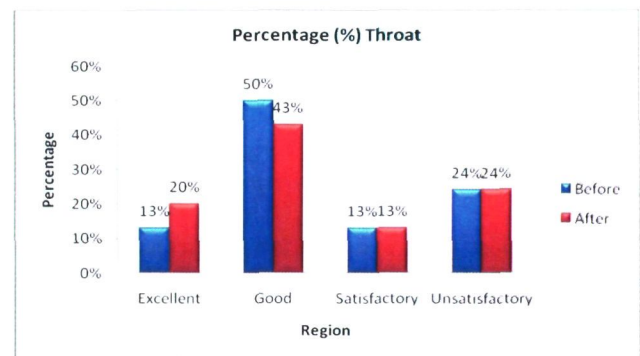


Figure 6: Percentage for throat

For the throat percentage shown at figure above, respondent with *excellent* category have increased up to 20% from 13% and *good* category have decreased from 50% to 43% respectively. While the respondent with *satisfactory* and *unsatisfactory* category were maintained for both before and after performing ablation which is 13% and 24% each.

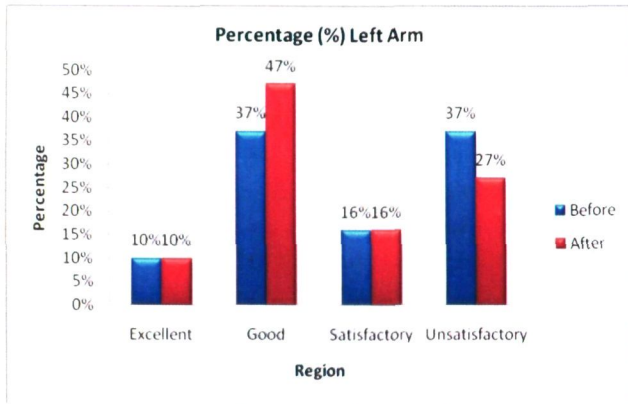


Figure 7: Percentage for the left arm

Figure 7 shows that 10% of the respondent maintain their *excellent* category while respondent with *good* category has increased from 37% to 47%. Analysis on right arm in Figure 8 shows that 53% of the sample are in the *good* category.

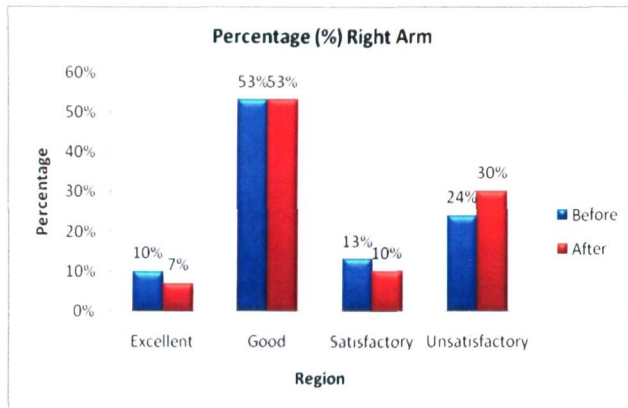


Figure 8: Percentage for the right arm

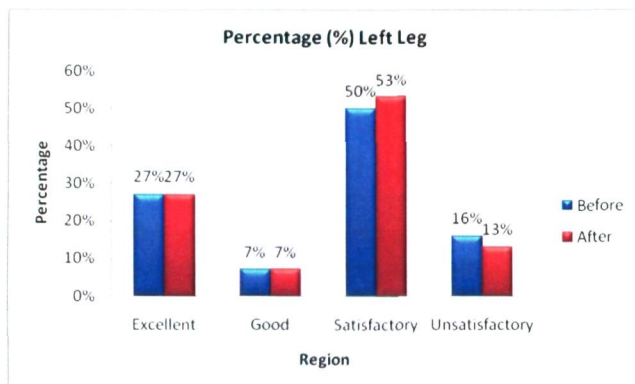


Figure 9: Percentage for the left leg

Figure 9 shows that the respondents in the *excellent* and *good* category were maintain at 27% and 7% respectively. Respondents with *satisfactory* category increased by 3% and *unsatisfactory* has decreased from 16% to 13% after performing ablation.

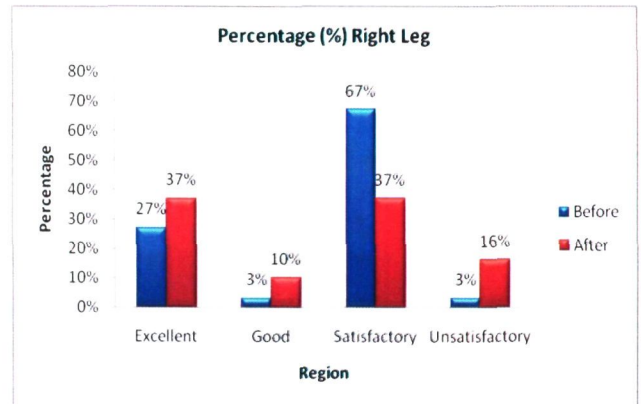


Figure 10: Percentage for the right leg

From Figure 10, it was found that samples with *excellent* category has increased from 27% to 37% while respondents with *satisfactory* incident decrease in their region from 67% to 37%. But the percentage of respondents with *unsatisfactory* has increased from 3% to 16%.

B. Data Analysis on Energy Field Score for each Respondent

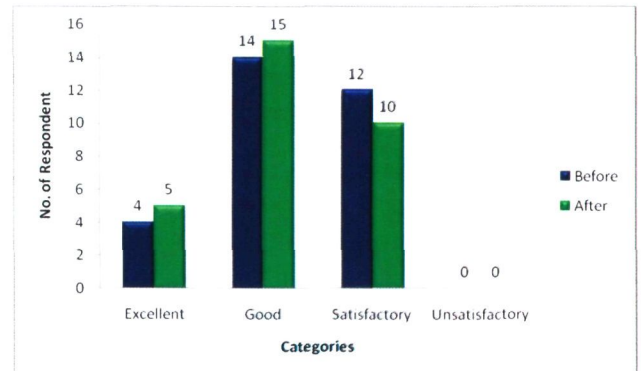


Figure 11: Bar graph for the Energy Field Score for each Respondent before and after perform ablation (wudu')

Figure 11 show the no. of respondents before and after performing ablation based on Energy Field Score. All analysis from figure above is translated into percentage as shown in Table 5.

Table 5: Percentage of Categories

Categories	Before Perform ablation	After perform ablation
Excellent	13%	17%
Good	47%	50%
Satisfactory	40%	33%
Unsatisfactory	0%	0%

From Table 5, it was found that 67% of the respondent experienced an improvement in their aura after performing ablation.

This result in line with finding [8] state that wudu' agent is water which gives rise to temperature gradients. Water ensures flexibility and visor of vessels distant from the heart by dilating them when hot and contracting them when cold. It prevents the transmission of many contagious diseases protecting skin.

It is also found that 33% of the respondents experience deterioration in their aura after performing ablation. This is due to auricle fields that are those in which outside influences are more likely impinging upon a person. Weakened auras can result in and reflect feelings of being a failure, health problems, and an effectiveness in many or all life situations[10].

VI. CONCLUSION

By conducting this research, the effect of ablation to human body aura was analyzed. The result show that 67% of the sample does improve significantly of human body aura after performing ablation. Analysis by each region also shows that *excellent* and *good* category has 67% for head of top region, 63% at throat region, 57% for left arm, 60% for right arm, 34% and 47% at left and right leg. This finding seems to agree in [8] stated performing ablation is a prescription for good health and energy to human body. It can be concluded that analysis does provide improvement significantly of human body aura after performing ablation (wudu').

VII. RECOMMENDATION

For future investigation, researcher can be proceed by observing the sample from female and male samples and can be extended to same or different ages. All point region can be considered with other parameters such as temperature surrounding and the measurement data can be taken at day.

REFERENCES

- [1] Technician's Manual for Scientific and Clinical Applications, '*Resonant Field Imaging*', Innovation Technologies and Energy Medicine April 1, 2003.
- [2] Husna Abdul Rahman, Siti Nurdiana Mohamad Rameli, Ros Shilawani S. Abd Kadir, Zunairah, Haji Murat and Mohd Nasir Taib, "*Analysis of correlation between Body Mass Index and human physical condition using Resonant Field Imaging system (RFI)*," RF and Microwave Conference 2008, Desember 2008.
- [3] '*Resonant Field Imaging™*' Innovation Technologies and Energy Medicine, <http://www.item-bioenergy.com/rfi/intro.html>. Retrieved July 29, 2010.
- [4] '*Aura Imaging*' Texas-Mexico Holistic Health Network, http://www.divinespiritchurch.com/aura_imaging. Retrieved July 29, 2010.
- [5] '*The Medical and Spiritual Benefits of Performing*', <http://www.helium.com/items/1055156-the-medical-and-spiritual-benefits-of-performing-ablution> .Retrieved January 30,2011
- [6] '*Islamic and Medical Benefits of Wudhu*', The Propagation of the Truth,<http://personal.babelred.com/the-propagation-of-the-truth/categoria.asp?idcat=36>. Retrieved February 18, 2011
- [7] '*Resonant Field Imaging: Aura Brain and Imaging System.*' Technician's Manual for Scientific and Clinical Applications. Innovation Technologies and Energy Medicine (ITEM). April 2009.
- [8] Dr. H. Nurbaki, "Wudu: a prescription for good health," Issue :1, Article in The Fountain Magazine, January - March 1993
- [9] Richard Webster, The Complete Book of Auras: Learn to See, Read, Strengthen & Heal Auras,1stEdition, Llewellyn Worlwide, 2010, pp 1-199
- [10] Ted Andrews, How To See and Read the Aura, 1st Edition, Llewellyn Worlwide, 2010, pp 198
- [11] '*The Important of Wudhu-Ablution*', <http://sekolahrumahdiamerika.blogspot.com/2007/12/iimportant-of-wudhu-ablution.html>. Retrived March 2011
- [12] Dr. Sharif Kaf Al-Ghazal, "Medical Miracles Of The Quran" - The Islamic Foundation, 2006 - Pages 91-92