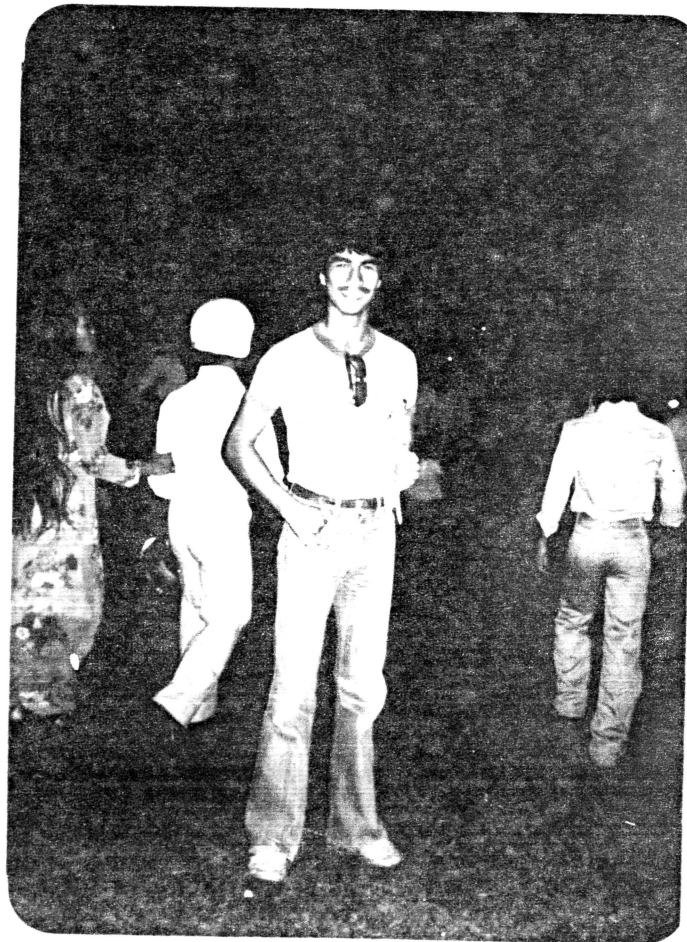


Development Of Kampong Hulu Melaka
Its Mosque And The Impact On
The Surrounding

PTAR I.T.M.



DEVELOPMENT OF KAMPONG HULU MELAKA,
ITS MOSQUE AND THE IMPACT ON THE
SURROUNDING

THE AUTHOR:

NAME: SYED ALWI ALHABSHI

COURSE: ARCHITECTURE YEAR 4 81/82

~~26.2~~ 726.2
SYE ALW

CONTENTS

1. ACKNOWLEDGEMENT
 2. INTRODUCTION
 3. HISTORY
 - development of Kampong Hulu
 - the start of the Mosque in Melaka
 - Mystical beliefs of Kampong Hulu Mosque
 - the pyramidical mosque
 4. ARCHITECTURE - the 3 tiered mosque of Kampong Hulu
 5. CONCEPT
 - concept of GOD and MANKIND
 - the LOTUS
 - The form of the mosque
 - Roof ornamentation
 - symbols of ignorance and submission
 6. INFLUENCES (ILLUSTRATION)
 - Chinese
 - Islamic
 - Dutch
 - Colonial
- references

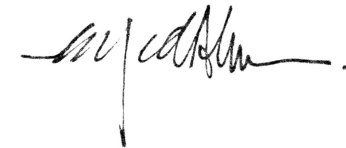
ACKNOWLEDGEMENT

I would like to wish my gratitude for the help and guidance given by the people of the Kampong Hulu Mosque the bilal Encik Abdul Rahman, mu uncles, my father Syed Mohd Alhabshi and to all those whom I have interviewed to-gather this information.

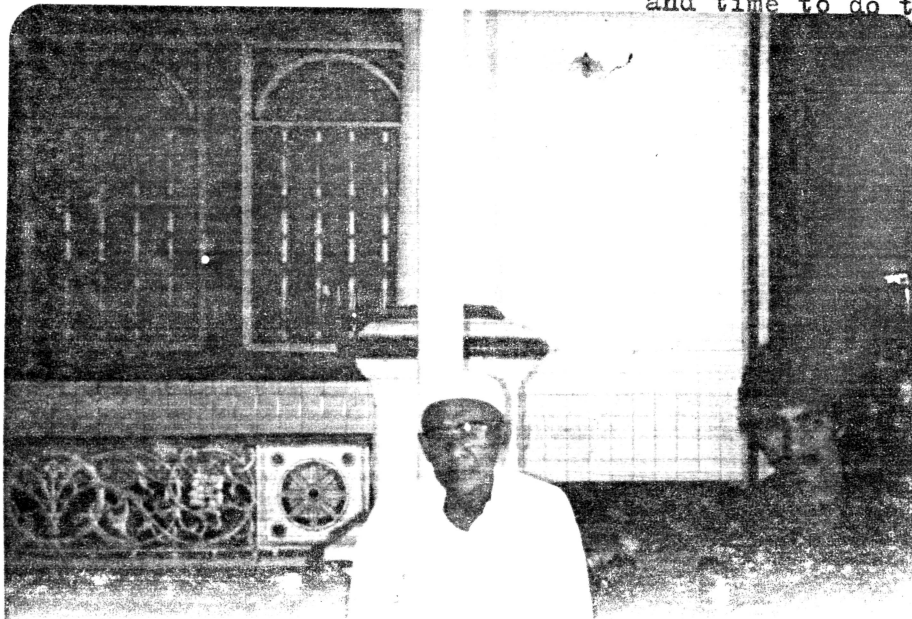
My thanks also to Encik Jalil the curator of the Malacca Museum which had showed me the path for this dissertation and also last but not least Encik Mutallib, the research coordinator which had given me confidence and time to do the research.

The Author...

Syed Alwi



The author with the bilal of Masjid
Kampong Hulu.



INTRODUCTION

Kampong Hulu area and its influence on the Islamic expansion in Melaka has gone a long way back since the time of Parameswara as related by Munshi Abdullah. (a well known Malay figure)

The significant of this area is due to its importance in religion that is Islam which spreads throughout Melaka eventually. Kampong Hulu in the olden times as related by the bilal of the mosque was known as the 'Serambi of Melaka' meaning the area is the seat for seeking Islamic religion. People from the exterior and the inland areas converge to this area to seek knowledge in Islamic religion. Due to this importance I chose this area for my research in the mosque towards the social surrounding and its impact on the planning of the layout.