

# MEASUREMENT OF HUMAN BODY AURA USING RESONANT FIELD IMAGING

Zunairah Haji Murat, Mohd Nasir Taib and Nooraini Hana Mckhtar  
Faculty of Electrical Engineering  
Universiti Teknologi MARA, 40450 Shah Alam, Selangor

*Abstract:* This paper presents the measurements and analysis of human body aura using the Resonant Field Imaging (RFI) system. The understanding of bioenergy and its relationship with the human body were obtained from the frequency measurement at 36 points on the human body. Using custom designed software, the RFI measurements were then interpreted to show the psychology and physiological states of the human sample.

**Keywords:** Resonant field imaging, Aura, Physiological

## INTRODUCTION

Aura is a traditional term for the protective psychic and spiritual energy fields that surround and penetrate the physical body [1]. Thus, the human aura is a radiation from the body in a manner similar to the radiation of the spokes of a wheel from the hub thereof. It is from the invisible atmosphere that was received at the first impression of people [2]. Part of human body, brain also radiates (waves) frequencies of electrical energy [3]. The total frequencies are broken down into the specific frequency ranges and are measured in cycles per second. Its concept is similar to that of a rainbow, where visible light is formed by a mixture of colours which can be seen through a prism.

The Resonance Field Imaging (RFI) system is developed by the Institute of Technical Energy Medicine, USA that employs a handheld frequency meter with a specially tuned antenna that measures the frequency in Megahertz [4]. RFI is the first Aura Imaging technology that can create full colour bioenergy charts of objects, plants, animals and even ambient bioenergy or brainwaves in the air.

## METHODOLOGY

The experiment reported here includes: First, a survey on the samples' biodata and academic performance. Cumulative grade point average (CGPA) marks were used as a measure of academic achievement. Secondly, frequency measurements, which are taken twice, for 21 female and 21 male students at one-week interval around 8 to 12 o'clock in the morning. The frequency is measured at 36 points around the perimeter of the samples' body.

Fifteen of the points (see Figure 1) are referred to as the Health Level. During RFI measurements, the antenna is placed at a right angle approximately four inches from the body, and at the middle of the Health Level region of interest. The Psychological Level comprises 15 regions and also can be called the Emotional Level or Emotional Body (see Figure 2).

Each sample analyzed is recorded into three characteristics:

1. Left Body-Environmental Influences: examines the seven regions that comprise the left side of Psychological Level that are influenced by environment energies.
2. Right Body-Behavioural Patterns: evaluates the seven regions that make up the right side of the Psychological Level, which indicates the energies projected by the subject into the environment.
3. Physiological Analysis: considers all 15 Health Level regions

## RESULTS AND DISCUSSIONS

The following data is the results obtained from the questionnaires and frequency measurements. Figures 3 and 4 show the distributions for the female and male samples, respectively. More than 43% of the female sample had their CGPA above 3.00, while that for the male is 38%. Figures 5 and 6 show the brain dominant for female and male samples, respectively. From these figures, it is clear that both group of samples somehow shifted their brain dominance from right to left. It was found out later that, during the second measurement, the students were preparing for their test. Figure 7 shows the physiological analysis for female samples that considers all 15 Health Level regions.

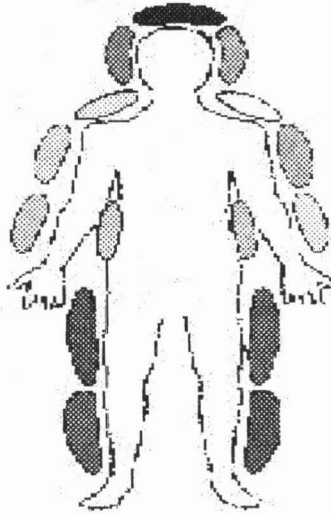


Figure 1: 15 regions of health level

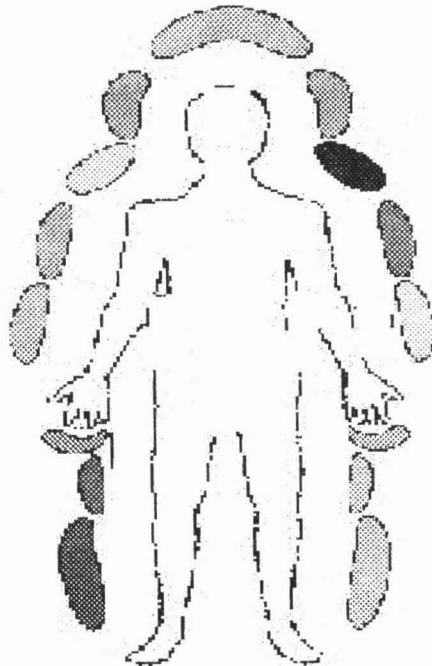


Figure 2: Psychological Level regions

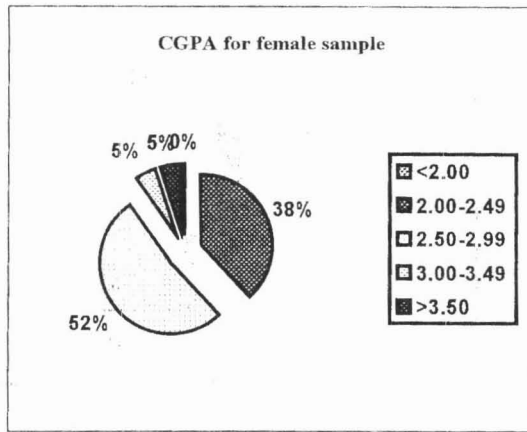


Figure 3: Comparison of the CGPA between female samples

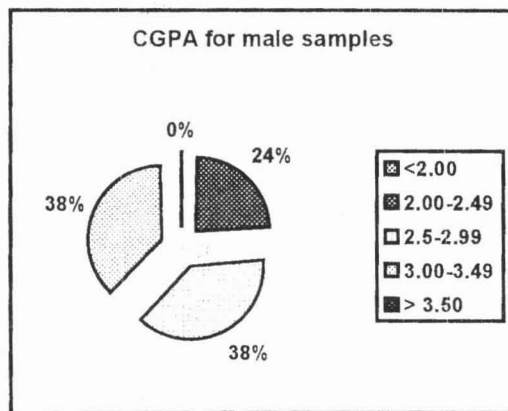


Figure 4: Comparison of the CGPA between male samples

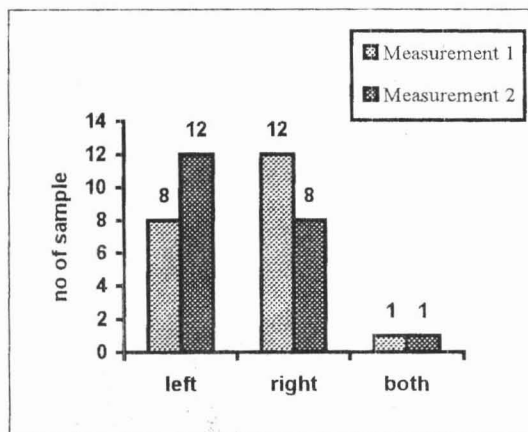


Figure 5: Brain dominance (female samples)

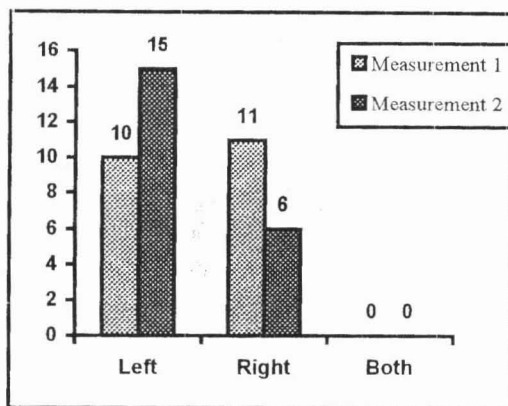


Figure 6: Brain dominance (male samples)

For the first measurement, *Purple* is present at points 5 and 9, which indicates the mental activity is influencing and controlling biological activity and physical health. *Red* is present at points 2, 12 and 16, which indicates the presence of pain or biological malfunction at these area. *Green* is present at points 1 and 3 indicating the affected area experiencing increasing blood circulation from unhealthy to healthy level. *Grey/black* is present at points 7 and 11 indicating over stimulation and stress of biological systems.

For the second measurement, *Green* is present at points 1, 9, 10 and 11 indicates the affected are currently experiencing increasing blood circulation from unhealthy to healthy level. *Navy* is present at points 13 and 16 indicating increasing biological activity at the affected area. *Orchid* is present at point 12 indicating a positive and pleasant psychological association with the part of the body.

Figure 8 shows the Psychological level for male samples at left body that is influences by the environment energies on seven regions.

For the first measurement, two of seven regions including the left hand, point 4 are *Orchid* showing the person is receiving protection, shielding from destructive energies, emotional balance, peaceful and stability. One region is a *Red* colour that shows the material and physical focus and indicating mental activity related to material self-gratification, accomplish of material goals and ambitions. Two regions are *Burgundy* colour indicating the person is receiving materialistic energy from the environment.

For the second measurement, two of seven regions are *Gray/black* indicating the person is receiving strong intense negative or destructive emotions energies from this environment. Point 25 is *Silver*, indicating the person is protection, shielding from destructive energies, emotional balance, peacefulness and stability. The left hand, point 4 is still the *Orchid* colour.

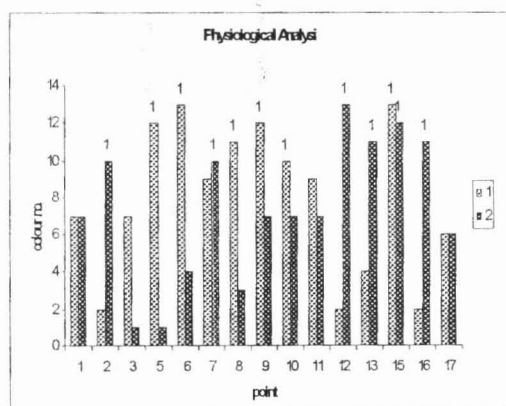


Figure 7: The psychological analysis for female samples

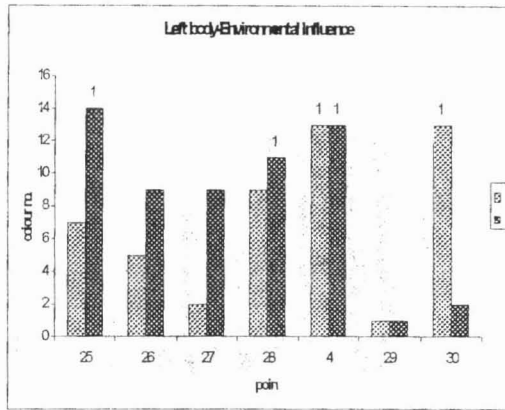


Figure 8. Left Body-Environmental Influences for male samples

Figure 9 shows the psychological level for male sample 1 at right body, which indicates the energies projected by the subject into the environment on seven regions.

For the first measurement, two of seven regions are *Green* showing the person is projecting emotional energies, love, and caring to the environment. Two regions are *Blue* showing that the person is communicator, perspective of reality, search for and expression of truth. The *Purple* colour (point 19) indicating the person projects intellectual energy and clarity of thought energies. One region is *Rose* meaning the person is projecting sexual energy related to physical pleasures emotional and romantic fulfilment.

For the second measurement, three of seven regions including the right hand (point 14) are *Yellow*, indicating that the person is projecting happiness and well being nature with a healthy measure of balanced caution to the environment. Two regions are *Green* showing the person is projecting emotional energies, love, and caring to the environment.

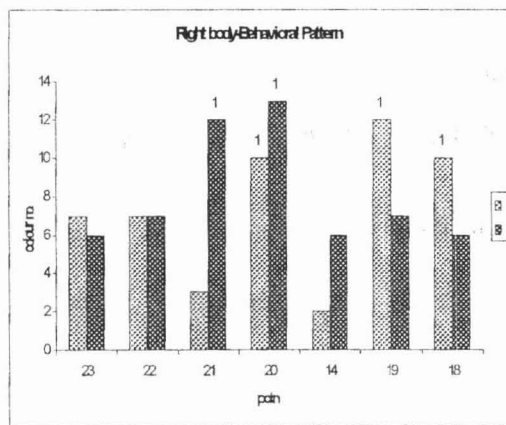


Figure 9: Right Body-Behavioural Patterns for the male samples

Figure 10 shows the physiological analysis for male sample 1 that considers all 15 Health Level regions.

For the first measurement, *Orchid* is present at point 5, 6 and 9 which indicating a positive and pleasant psychological association with the part of the body. *Silver* is present at point 1 and 2 indicating stability and endurance in the area of the body where the bioenergy is located. *Rose* is present at the point 3, and 15 which indicates the sensory stimulus is currently acting upon the affecting area.

For the second measurement, *Orchid* is present at point 1, 2, 3 and 8 indicating a positive and pleasant psychological association with the part of the body. *Rose* is present at point 13 and 17 which indicates the sensory stimulus is currently acting upon the affected area.

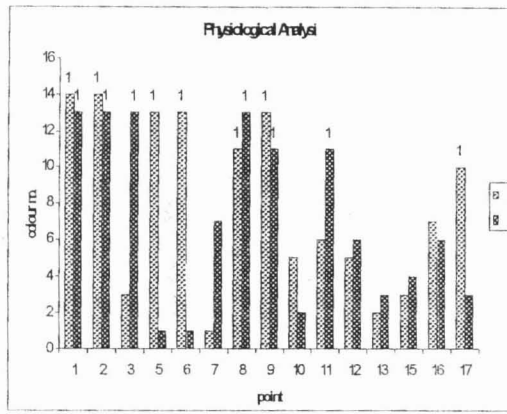


Figure 10: The psychological analysis for male samples

### CONCLUSION

The RFI system had been shown to successfully measure the psychology and physiological states of the samples including left and right brain dominances. From the survey, it was observed that the samples were engineering students with right-dominant brain. During their preparation for test, their brain dominance was shown to shift to the left.

From the frequencies collected, RFI system gives a detailed colour interpretation for each of the 36 points on the human body.

### REFERENCES

1. [www.ironpalm.com/Aura](http://www.ironpalm.com/Aura)
2. William Buskist, David W. Gerbing (1990), *Psychology: Boundaries and Frontiers*, Harpercollins, USA.
3. [brain.web\\_us.com/binaural.htm](http://brain.web_us.com/binaural.htm)
4. [www.item-bioenergy.com](http://www.item-bioenergy.com)