

FUNDAMENTAL OF
ENTREPRENEURSHIP
(ETR 300)

BAKLAVA DESSERT

BAKLAVA DESSERT HOUSE



BAKLAVA DESSERT HOUSE

UNDER ONE ROOF

CONTENTS

TABLE OF CONTENT

PAGES

Cover later	0
Appreciation	1
<u>BUSINESS PLAN</u>	
Agreement of Partnership	2-5
Pudding	6
Executive summary	7
Purpose of business plan	8
Business background	9
Business logo	10
Business card	11
Background of partnership	12-15

ADMINISTRATION

1.0	INTRODUCTION TO THE ORGANISATION	
1.1	Location of the Business	16
1.2	Administration Strategy	17
1.3	Administration Structure	18
2.0	Organization Chart	19
3.0	Administration Personal	20
4.0	Task and Responsibility	21-23
5.0	Schedule of Remuneration	24
6.0	Job Incentive	25-26
7.0	List o Furniture, Fixtures and Fittings	27
8.0	Administration Budget	29

MARKETING PLAN

1.0	Marketing Plan	29
2.0	Target Market	30
3.0	Market Size	31-32
4.0	Competitors	33-35
5.0	Market Share	36-37
6.0	Sales Forecast	38-39
7.0	Marketing Strategy	40-43
8.0	Schedule of Remuneration	44
9.0	Marketing Budget	45

OPERATION PLAN

1.0	Operation Process	46
1.1	Producing Products	46-47
1.2	Suppliers	48
	1.2.1 Pies	
	1.2.2 Ice Cream	
	1.2.3 Ice Blended	48-49
2.0	Process Flow Chart	50-55
3.0	The Operation Output	56-57
4.0	Material Requirement (Basic of Raw Materials)	58-60
	4.1 Name of Suppliers for all materials	61
5.0	Personal List and Responsibility	62
6.0	Remuneration	63
7.0	List of Machine and Equipment	64-67
8.0	Operation Spaces Layout Plan	68-69
9.0	Location	70
10.0	Operation Overhead	71
11.1	Operation Budget	72

FINANCIAL PLAN

1.0	Financial Plan,	73
1.1	Objectives Financial Plan	
1.2	Importance of Financial Plan	

APPENDIXES



Diploma in Estate Management (AP 115),
Faculty of Architecture, Planning and Surveying,
MARA University of Technology,
40000 Shah Alam,
Selangor Darul Ehsan.

Entrepreneur Lecture,
Basic of Entrepreneurship (ETR 300),
MARA University of Technology,
Selangor Darul Ehsan.

August 28, 2003

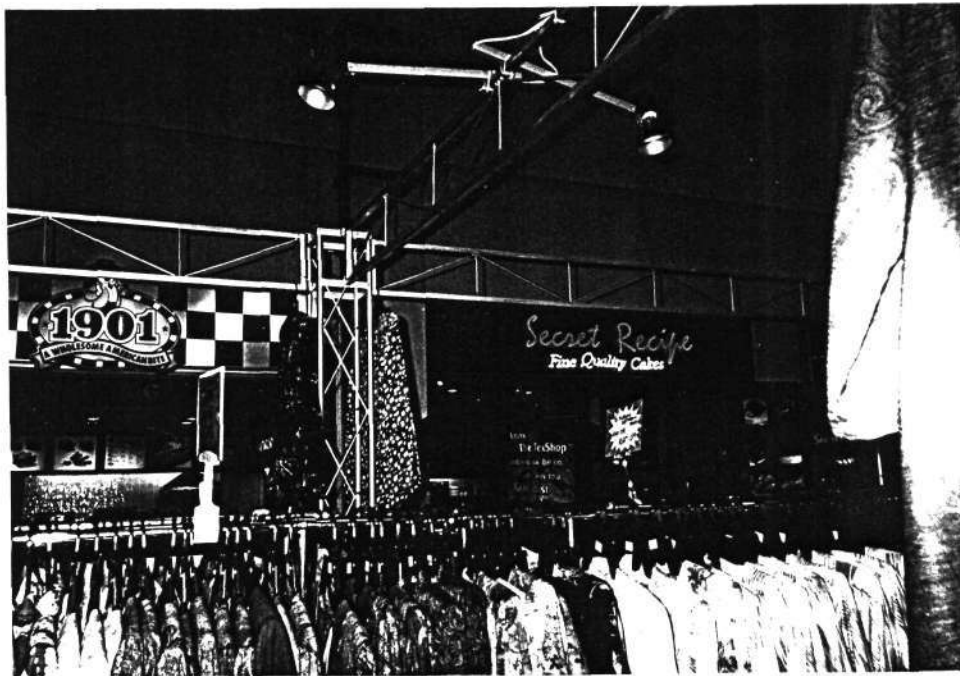
Sir,

BUSINESS PLAN

We enclose herewith business plan for your attention to fulfill Entrepreneur subject (ETR 300).

2. We agreed to established a business named of **Baklava Dessert House**, we had chosen the business because of good potential to success in the future.
3. I hope that you are satisfied with the proposal.

Thank you.



VIEW OF SUBJECT PROPERTY

LOT A13, GIANT HYPERMARKET SECTION 13, PERSIARAN SUKAN SHAH ALAM, 40100 SHAH ALAM, SELANGOR DARUL EHSAN.

TELEPHONE/FAX NO.: 03-55112222/03-55112223 EMAIL: Baklava_DH@catcha.com