



**NEW MILLENNIUM ANNULUS ENGINE
MECHANISM**

**AZMI BIN AB. RAHMAN
(2000482996)**

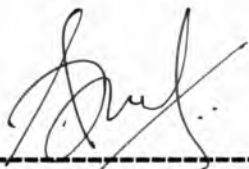
**HAIRULANAM MAT SWADI
(2000483283)**

**HALEK BIN HALIMOON
(2000482925)**

**FINAL YEAR PROJECT REPORT
DIP. IN MECHANICAL ENGINEERING
(MANUFACTURING)
FACULTY OF MECHANICAL ENGINEERING
MARA UNIVERSITY OF TECHNOLOGY
SHAH ALAM, SELANGOR
MALAYSIA**

“We declare that this thesis is the result of our own work except the ideas and summaries which we have clarified their sources. The thesis has not been accepted for any degree and is not concurrently submitted in candidature of any degree”

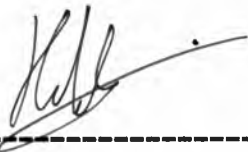
Signed:



AZMI BIN AB. RAHMAN
2000482996



HAIRULANAM MAT SWADI
2000483283



HALEK BIN HALIMOON
2000482925

PREFACE

Nowadays, the mechanical automotive engineering technologies are advancing in a greater pace towards the most advanced automobile system of combustion with the maximum elimination of mechanical loss. The main scope of this thesis is to present the basic concept of how the New Annulus Engine Machine operates and its advantages. In conjunction with this fact, we also distinguished the features it offers with the current engine design so it would have concrete points to compete with them.

New Annulus Engine Machine still implies the same concept as a 4-stroke engine i.e. *intake, compress, power, and exhaust* except that it operates neither in line nor V-shape but in the same circular plane as do a scissor. Here, we include the construction of the engine; diagrams on how it operates and several remedies it offers to the common troubleshoot of present automobile engine. Typical specifications and dimensions are also included.

During the planning and preparation of this thesis, we would like to thank once more to all the supportive individual involved in completing this thesis especially Dr. Rahim Atan for his kind assistances. Critics and comments are most welcomed by us. We need adequate motivation support in order to bring this thesis to a higher standard.

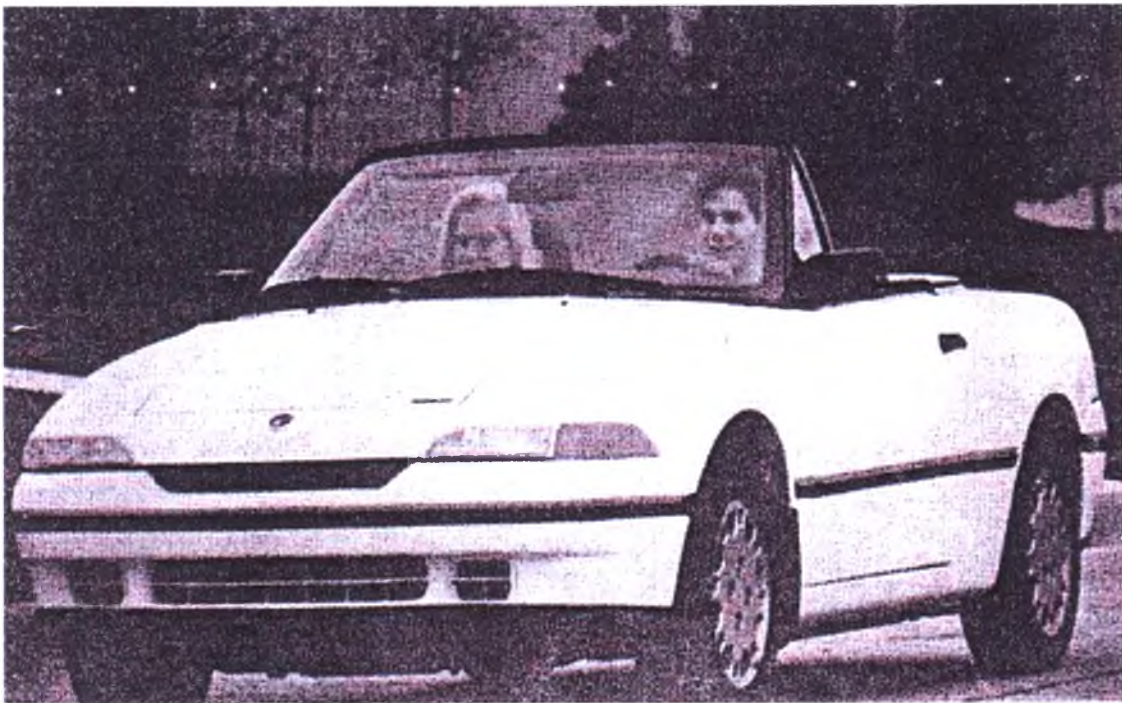
TABLE OF CONTENTS

	CONTENTS	PAGE
	PREFACE	i
	ACKNOWLEDGEMENTS	ii
	TABLE OF CONTENTS	iii
Chapter 1	Introduction to automobile	1-2
	Construction of the automobile	3
	The source of Power	4-6
Chapter 2	Engine types and classifications	7-19
Chapter 3	New Millennium Annulus Engine Mechanism	20-32
Chapter 4	First assembly of New Annulus Engine	33-40
Chapter 5	Second assembly of New Annulus Engine	41-44
Chapter 6	Semi connection and Valve timing profile	45-52
Chapter 7	Advantageous features	53-55
Chapter 8	Conclusion	56-57
Appendices		58-83
References		84

INTRODUCTION TO AUTOMOBILE

The automobile is a self-propelled vehicle that travels on land. It usually has four wheels. An engine provides the power to move the vehicle. The automobile, or car, carries people primarily for their personal transportation.

There are many different styles of cars. There are luxury cars like the astonishing royalty of Mercedes with its S-class, gallants like the classic Volvo 240 model and vintages like the '79 Fiat 500 convertible. Some prefers domestic cars like our V-engine Proton Perdana V6 or the economic yet elegant Perodua Kancil of 850 in cc. Regardless of the style; the automobile is a type of motor vehicle. This is the name given to any self-propelled vehicle that does not run on rails. Two other types of motor vehicles are the truck and the bus. A truck primarily transports goods and cargo. A bus is a motor vehicle that may carry many passengers. Motor vehicles are also called automotive vehicles.



People use variety of cars primarily for personal transportation.