

JAPANESE CULTURE AND THE MORALS

By

Tomonari Tsuchiya

16 November 2017

SPACE AND SILENCE

- SPACE FROM OUR MORALS
- FROM THE SPIRITUAL ATMOSPHERE AND THE DISTINCTIVE MOOD

JAPANESE MUSIC FROM TRADITIONAL INSTRUMENTS

- Origin
- Instruments Categories

JAPANESE MUSIC FROM TRADITIONAL INSTRUMENTS

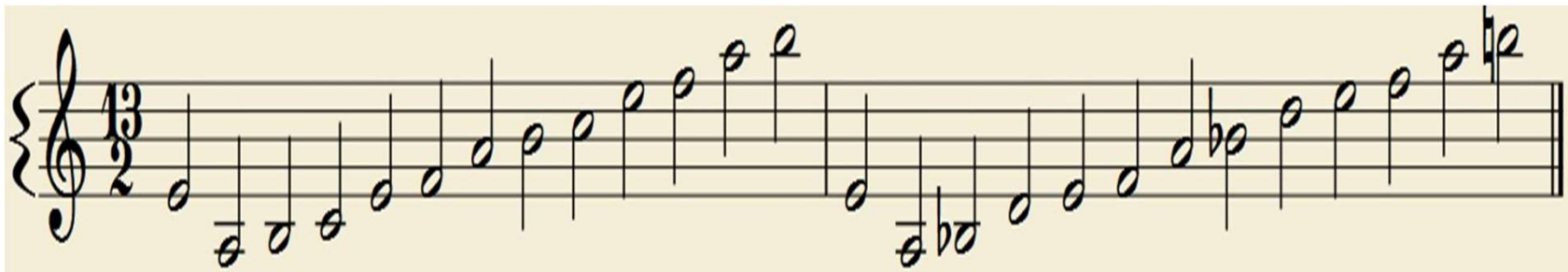
- KOTO
- SHAMISEN
- SHAKUHACHI
- SHO

KOTO



KOTO TUNINGS

- HIRA JOSHI (LEFT)
- KUMOI JOSHI (RIGHT)



SHAMISEN



SHAMISEN TUNING



SHAKUHACHI



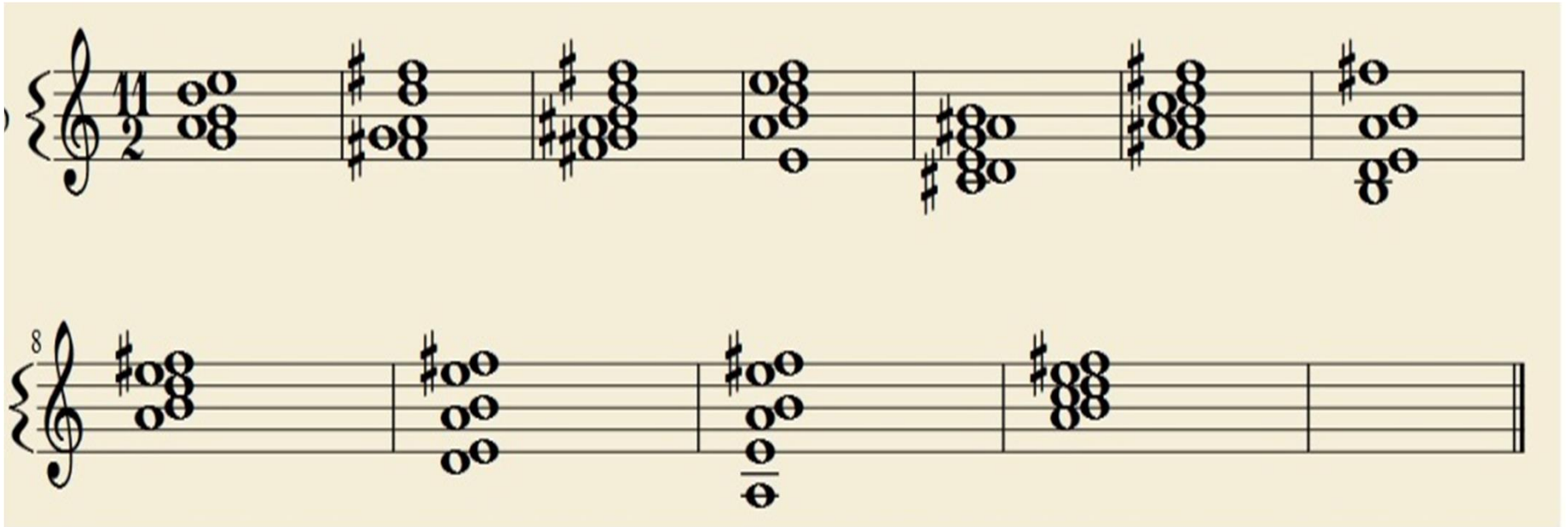
SHAKUHACHI

- EMBOUCHURE
- OUT OF TEMPO
- BREATHING TECHNIQUE

SHO



SHO's CHORDS



SUMMARY

- RELIES OF INSTRUMENTAL TECHNIQUES AND TIMBRE ALONG WITH POETIC SONGS AND PLAYS.
- EACH INSTRUMENTS HAS FIXED TUNING
- LIMITED NUMBERS OF TUNINGS
- MELODIES ARE MAINLY MODAL AND HOMOPHONIC

- 'All Japanese art forms spring from a concept of beauty that focuses on simplicity of gesture to enable artistic expression to manifest itself most purely. This is why Japanese musicians are not interested in adding complexity to the homophonic textures of their music.'



FROM PAGODES



Musical score for "The Rose Tree" in G major, 3/4 time. The score is for two parts: a vocal line (Soprano/Alto) and a piano accompaniment. The vocal line is marked *pp* (pianissimo) and features a melody with many triplets. The piano accompaniment consists of a simple bass line. The score is divided into three measures, with a repeat sign at the end of the third measure.

Musical score for "The Rose Tree" in G major, 3/4 time. The score is for voice and piano. The vocal line begins with a treble clef and a key signature of one sharp (F#). The piano accompaniment begins with a bass clef and a key signature of one sharp. The tempo is marked "Rit." (Ritardando). The score includes a double bar line and a repeat sign. The piece concludes with a final chord in the piano part.

Sans lenteur

A musical score for piano and violin. The piano part is in the lower staff, and the violin part is in the upper staff. Both are in the key of D major (two sharps). The tempo is marked "Sans lenteur". The piano part begins with a piano (*p*) dynamic and features a continuous eighth-note accompaniment. The violin part has a melodic line with slurs and ties across measures. The score consists of four measures.

p

dans une sonorité plus claire

dans une sonorité plus claire

This is a handwritten musical score for piano, consisting of two staves. The key signature is D major, indicated by two sharps (F# and C#) at the beginning of each staff. The time signature is not explicitly written but appears to be 4/4 based on the phrasing.

Staff 1 (Treble Clef):

- Measures 1-4: A series of complex chords, mostly triads and dyads, with some slurs. A slur connects the first two measures.
- Measures 5-8: Continuation of complex chords, including some with sixteenth-note patterns. A slur connects measures 6 and 7.
- Measures 9-10: Final measures of the staff, ending with a whole note chord.

Staff 2 (Bass Clef):

- Measures 1-4: Complex chords, including some with sixteenth-note patterns. A slur connects the first two measures.
- Measure 5: A measure with a treble clef, containing a single note (F#4).
- Measures 6-8: Continuation of complex chords, including some with sixteenth-note patterns. A slur connects measures 6 and 7.
- Measures 9-10: Final measures of the staff, ending with a whole note chord.

Dynamic Markings:

- The first measure of the second staff is marked with a forte dynamic, *ff*.

Other Notations:

- There are several slurs and ties throughout the piece, indicating phrasing and continuity.
- The handwriting is in black ink on white paper.

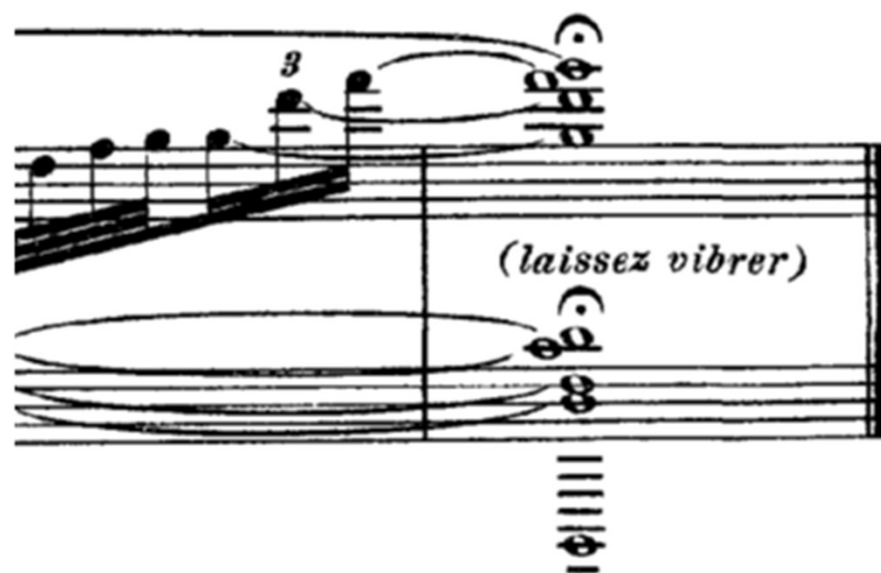
A handwritten musical score consisting of two staves. The key signature is E major, indicated by four sharps (F#, C#, G#, D#) at the beginning of the first staff. The time signature is not explicitly written but appears to be 4/4 based on the notation. The first staff features a melodic line with a long slur spanning across the first two measures, followed by a second slur in the third measure. The second staff provides a harmonic accompaniment, primarily using eighth and sixteenth notes. A dynamic marking of *p* (piano) is placed at the start of the second staff. The notation includes various musical symbols such as notes, rests, slurs, and a trill-like wavy line above the first staff in the third measure.

8

1 Tempo

p *dim.* *pp*

The image shows a musical score for a piano piece. It consists of two staves: a treble staff and a bass staff. The treble staff features a melodic line composed of eighth notes, with slurs grouping them in pairs. Above the treble staff, there are markings '8', '5', and '1' indicating fingerings. The bass staff provides a supporting line, also with slurs, and a '5' marking. The dynamics are marked as *p* (piano), *dim.* (diminuendo), and *pp* (pianissimo). A '1 Tempo' marking is positioned above the treble staff. The key signature is one sharp (F#), and the time signature is not explicitly shown but appears to be common time (C).





MUSIC STRUCTURE

- The development of a single musical motif into larger masses of material.
- Gradual simplification of material by moving from textures of great complexity to simpler textures.

RAINTREE SKETCH II

The musical score for "RAINTREE SKETCH II" is presented in two systems. The first system is marked "Tempo II" and the second system is marked "Slightly slower". Both systems feature a piano (p) part and a percussion part.

First System (Tempo II):

- Piano Part:** The piano part begins with a *poco mf* marking. It features a series of chords and single notes, with a *p* (piano) marking in the middle and a *pp* (pianissimo) marking towards the end. A large, sweeping slur covers the first half of the system.
- Percussion Part:** The percussion part consists of a series of chords and single notes, with a *p* (piano) marking in the middle.

Second System (Slightly slower):

- Piano Part:** The piano part begins with a *pp* (pianissimo) marking. It features a series of chords and single notes, with a *p* (piano) marking in the middle and a *pp* (pianissimo) marking towards the end. A large, sweeping slur covers the first half of the system. The system concludes with a *poco mf* marking.
- Percussion Part:** The percussion part consists of a series of chords and single notes, with a *p* (piano) marking in the middle. The system concludes with a *poco mf* marking.

Handwritten Annotations:

- A large, handwritten "A" is circled in the middle of the second system, above the piano part.
- Below the piano part of the second system, there are two sets of handwritten notes: "(Ped and lib)" and "(DD)".

KODAMA

Durée : 6 minutes environ

Susumu YOSHIDA

Durée : 6 minutes environ

Susumu YOSHIDA

Silence Profond 15"

Sonore et tendu (m.g.) 3" (m.d.) 1" 3" 0,5"

imagine end-gare et le piece

10"

jouer successivement les trois notes dans le désordre *

2"

cresc. accélérer peu à peu jusqu'au maximum

25"

cresc. accélérer peu à peu jusqu'au maximum

max ff

Short

THE END!!!!