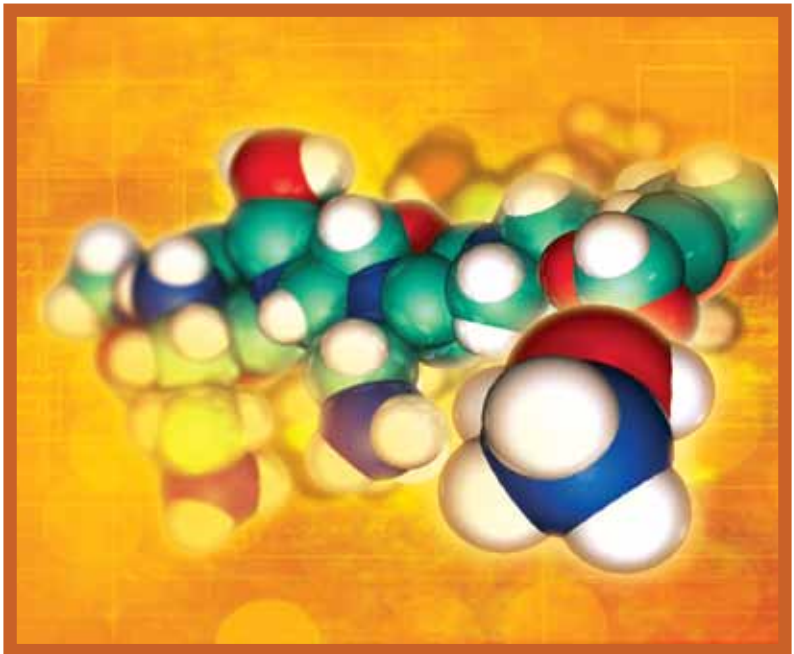


VOLUME 9 No. 1
JUNE 2012

ISSN 1675-7009

SCIENTIFIC RESEARCH JOURNAL



RESEARCH MANAGEMENT INSTITUTE



SCIENTIFIC RESEARCH JOURNAL

Chief Editor

Zaiki Awang
Universiti Teknologi MARA, Malaysia

Managing Editor

Hajah Razidah Ismail
Universiti Teknologi MARA, Malaysia

International Editor

David Shallcross, University of Melbourne, Australia
Ichsan Setya Putra, Bandung Institute of Technology, Indonesia
K. Ito, Chiba University, Japan
Luciano Boglione, University of Massachusetts Lowell, USA
Vasudeo Zambare, South Dakota School of Mines and Technology, USA

Editorial Board

Abu Bakar Abdul Majeed, Universiti Teknologi MARA, Malaysia
Halila Jasmani, Universiti Teknologi MARA, Malaysia
Hamidah Mohd. Saman, Universiti Teknologi MARA, Malaysia
Jamil Salleh, Universiti Teknologi MARA, Malaysia
Kartini Kamaruddin, Universiti Teknologi MARA, Malaysia
Mohd Rozi Ahmad, Universiti Teknologi MARA, Malaysia
Mohd. Nasir Taib, Universiti Teknologi MARA, Malaysia
Mohd Zamin Jumaat, University of Malaya, Malaysia
Muhammad Azmi Ayub, Universiti Teknologi MARA, Malaysia
Norashikin Saim, Universiti Teknologi MARA, Malaysia
Noriham Abdullah, Universiti Teknologi MARA, Malaysia
Saadiyah Yahya, Universiti Teknologi MARA, Malaysia
Salmiah Kasolang, Universiti Teknologi MARA, Malaysia
Wahyu Kuntjoro, Universiti Teknologi MARA, Malaysia
Zahrah Ahmad, University of Malaya, Malaysia
Zulkiflee Abdul Latif, Universiti Teknologi MARA, Malaysia
Zulhabri Ismail, Universiti Teknologi MARA, Malaysia
Ahmad Zafir Romli, Universiti Teknologi MARA, Malaysia
Robert Michael Savory, Petronas Malaysia

Journal Administrator

Puteri Murni Bt Salleh Hudin
Universiti Teknologi MARA, Malaysia

© UiTM Press, UiTM 2012

All rights reserved. No part of this publication may be reproduced, stored in a retrieval system or transmitted in any form or by any means; electronics, mechanical, photocopying, recording or otherwise; without prior permission in writing from the Director of UiTM Press, Universiti Teknologi MARA, 40450 Shah Alam, Selangor Darul Ehsan, Malaysia. e-mail: penerbit@salam.uitm.edu.my

Scientific Research Journal is jointly published by Research Management Institute (RMI) and UiTM Press, Universiti Teknologi MARA, 40450 Shah Alam, Selangor, Malaysia

The views and opinion expressed therein are those of the individual authors and the publication of these statements in the Scientific Research Journal do not imply endorsement by the publisher or the editorial staff. Copyright is vested in Universiti Teknologi MARA. Written permission is required to reproduce any part of this publication.

SCIENTIFIC RESEARCH JOURNAL

Vol. 9 No. 1

June 2012

ISSN 1675-7009

1. **Comparative Study on Mitogen Activated Protein Kinase of Plasmodium Species by using *in silico* Method** 1
Mohd Fakharul Zaman Raja Yahya
Hasidah Mohd Sidek
2. **Digital Radiographic Image Enhancement for Weld Defect Detection using Smoothing and Morphological Transformations** 15
Suhaila Abdul Halim
Arsmah Ibrahim
Yupiter Harangan Prasada Manurung
3. **Extraction of Collagen from Catfish (*Clarias gariepinus*) Waste and Determination of its Physico-chemical Properties** 29
Normah Ismail
Nurul Asyiraf Abdul Jabar
4. **Factors Affecting Molecular Self-assembly and Its Mechanism** 43
Hueyling Tan
5. **Influence of Fresh and Thermoxidized Carotino Oil on Cyclic Guanosine Monophosphate (cGMP) in Erythrocytes from *Sprague Dawley Rats*** 63
Mohd Fakharul Zaman Raja Yahya
Athifah Najwani Shahidan

Digital Radiographic Image Enhancement for Weld Defect Detection using Smoothing and Morphological Transformations

Suhaila Abdul Halim¹, Arsmah Ibrahim¹, and Yupiter Harangan Prasada Manurung²

¹Faculty of Computer and Mathematical Sciences,

²Faculty of Mechanical Engineering

Universiti Teknologi MARA, 40450 Shah Alam, Selangor, Malaysia.

¹Email: suhaila889@salam.uitm.edu.my

ABSTRACT

Accurate inspection of welded materials is important in relation to achieve acceptable standards. Radiography, a non-destructive test method, is commonly used to evaluate the internal condition of a material with respect to defect detection. The presence of noise in low resolution of radiographic images significantly complicates analysis; therefore attaining higher quality radiographic images makes defect detection more readily achievable. This paper presents a study pertaining to the quality enhancement of radiographic images with respect to different types of defects. A series of digital radiographic weld flaw images were smoothed using multiple smoothing techniques to remove inherent noise followed by top and bottom hat morphological transformations. Image quality was evaluated quantitatively with respect to SNR, PSNR and MAE. The results indicate that smoothing enhances the quality of radiographic images, thereby promoting defect detection with the respect to original radiographic images.

Keywords: *Radiography, smoothing and morphological transformations, Signal to Noise Ratio, Peak Signal to Noise Ratio, Mean Absolute Error.*

Introduction

Radiography is the oldest and most widely used non-destructive testing (NDT) method for the effective detection of defects in materials [1-2]. Perpetual technological advancements has resulted in a significant increase in the use of Digital Radiography (DR), as opposed to conventional film radiography, in-line with increased computational analytical techniques through the digitization of images and their consequent readily achievable manipulation.

DR, also known as filmless radiography, has been widely implemented in many developed countries for more than 10 years, because it can enables immediate image analysis [3]. DR exhibits some disadvantages such as an inability to enable detection of small size (mm) of defects [4], it is expensive both to purchase and to convert existing film records into digital format. A further drawback is that DR is less sensitive than film radiography due to inherent random pixel noise due to image intensification coupled with poor image resolution. This lack of sensitivity is of significant concern in relation to the detection of defects in the resultant digital images.

It is common practice that a certified radiographer evaluates the quality of radiographic images visually, because it is easy, inexpensive and does not require any special equipment, however such inspections tend to be highly subjective, inconsistent [5], time consuming and labor intensive. The presence of noise and the low resolution of radiographic images have the potential to impair defect detection and it is thus of importance to perform image enhancement to mitigate disparity in radiographic image assessment. Improved image clarity should enable more rigorous and consistent radiographic image assessment with respect to defect detection.

This paper presents the results of a study pertaining to the enhancement of radiographic images using multiple techniques with respect to different types of defects. The techniques used to enhance image quality focus on noise removal and contrast improvement. Noise removal comprises of applying multiple smoothing techniques using median and average filters, whereas image contrast improvement is performed using top and bottom hat morphological transformations [6]. The resultant images are quantitatively evaluated with respect to quality using Signal to Noise Ratio (SNR), Peak Signal to Noise Ratio (PSNR) and Mean Absolute Error (MAE) analyses.

Image Processing

Image enhancement techniques reduce the noise by increasing the signal to noise ratio thereby improving the clarity of certain image features, which may be of significant interest to whomsoever is assessing it [7-9]. Conventional image enhancements include histogram equalization, image smoothing and direct grayscale transformation.

Image smoothing can remove noise and is an important first step in improving image quality [10]. According to Nicolae [11] noise removal is implemented to reduce the noise level and thus improve image quality enabling more accurate diagnoses. Of the well-documented noise removal techniques, median filtering is the most popular.

Median filtering is a smoothing technique which may be used to remove speckles and salt-and-pepper noise (impulsive noise) [12]. Such removal preserves sharp edges and image detail without loss of clarity, however it does not remove noise as efficiently as average and adaptive filtering techniques [13]. Median filtering comprises of replacing a pixel's gray level from $n \times n$ structuring elements (SE) with the median value of its neighborhood, which may be expressed mathematically according to equation (1).

$$K(i, j) = \text{median} \{I(i, j) \text{ is in } N(i, j)\} \quad (1)$$

where

$K(i, j)$ is the image after filtering process,

$I(i, j)$ is the original radiographic image,

$N(i, j)$ are the immediate neighbors of pixel $I(i, j)$ from $n \times n$ SE.

Average filtering replaces the value of a center pixel with the average value of the neighborhood pixels, equation (2). Both median and average filtering are based on $n \times n$ SE, which minimizes blurring of the image.

$$K(i, j) = \frac{1}{M} \sum_{(i, j) \in N(i, j)} I(i, j) \quad (2)$$

where

M is the total number of neighborhood pixels in $n \times n$ SE,

$N(i, j)$ corresponds to the pixels in the neighborhood of point $I(i, j)$ in $n \times n$ SE [14].

Although average filter able to reduce noise efficiently compared with median filter, but both normally result in eliminating thin lines and sharp corners in image and lead to blurring and distortion effects [15-16]. Due to the limitations of the two aforementioned smoothing techniques, it is proposed multiple smoothing and consequent morphological transformations with top hat and bottom hat. The techniques able to maximize the image contrast to make the defect more clearer from image background [17]. A clearly seen defect is very crucial in segmenting its boundary for defect detection [18]. The proposed technique may yield digital radiographic images of greater quality according to equation (3).

$$K * (i, j) = K(i, j) - (T(I(i, j)) + B(I(i, j))) \quad (3)$$

where $T(I(i, j))$ is the top hat and $B(I(i, j))$ is the bottom hat transformations that represented as in equation (4) and (5) respectively.

$$T(I(i, j)) = I(i, j) - \gamma(I(i, j)) \quad (4)$$

$$B(I(i, j)) = \rho(I(i, j)) - I(i, j) \quad (5)$$

for which

$\gamma(I(i, j))$ is the morphological opening on original image $I(i, j)$,

$\rho(I(i, j))$ is the morphological closing on original image $I(i, j)$.

Morphological transformations are used to improve image contrast, whereby the top and bottom hat filters correct for uneven illumination when the background is dark, Equation (4), and light, equation (5), respectively.

Methodology

A series of digital radiographic images taken of flawed specimens exhibiting different types of defects were acquired using an NDT Analyzer, Model: m 225D with digital image chain for enhanced contrast and superior resolution, Figure 1.



Figure 1: NDT Analyzer, Model: m 225D



Figure 2: SONASPECTION Flawed Specimen

Figure 2 presents an image of a flawed 12 mm thick carbon steel specimen manufactured by SONASPECTION (Serial Number: U-C-15), which was used to produce a digital radiographic image.

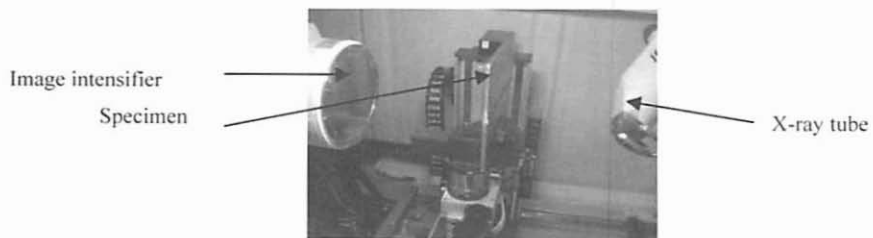


Figure 3: Interior of the NDT Analyzer

Figure 3 presents the analyzer interior, whereby the specimen is located between the image intensifier and the X-ray tube. The image enhancement algorithm developed and applied in this work was run under MATLAB R2009a. The flowchart for the image enhancement methodology is presented in Figure 4.

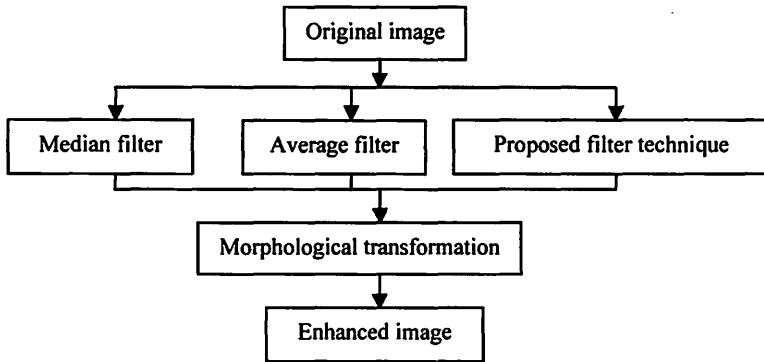


Figure 4: Image Enhancement Methodology Flowchart

The original image acquired from the analyzer is processed using median, average and proposed filtering before the morphological transformation of top and bottom hat are applied. Then, visual evaluation of enhanced images is performed by a certified welding radiographer followed by quantitative performance evaluation using Signal to Noise Ratio (SNR), Peak Signal to Noise Ratio (PSNR) and Mean Absolute Error (MAE).

SNR is a ratio of signal to noise strength, equations (7) and (8) respectively, and may be used to evaluate the degree of interference present in an image, equation (6). The ratio between two images in decibels is determined using PSNR, equation (9).

$$SNR = 10 \log_{10} \frac{signal}{noise} \quad (6)$$

where

$$signal = \frac{\sum_{i=1}^m \sum_{j=1}^n I(i, j)^2}{m \times n} \quad (7)$$

$$\text{noise} = \frac{\sum_{i=1}^m \sum_{j=1}^n K^*(i, j)^2}{m \times n} \quad (8)$$

$$\text{PSNR} = 10 \log_{10} \left(\frac{255^2}{\text{MAE}} \right) \quad (9)$$

MAE is used to measure the degree of image enhancement with respect to the enhanced and original images according to equation (10).

$$\text{MAE} = \frac{1}{m \times n} \sum_{i=1}^m \sum_{j=1}^n (K^*(i, j) - I(i, j)) \quad (10)$$

where

$m \times n$ is the image size (m rows, n columns),

$I(i, j)$ is the pixel value at (i, j) of an original image,

$K^*(i, j)$ is the pixel value at (i, j) of an enhanced image.

Results

The quality of the images obtained using the proposed filter technique is evaluated with respect to those acquired by only applying median and average filtering. Figure 5 presents four original radiographic images exhibiting different type of defects which are clustered porosity, slag inclusion and crack as shown in Image1, Image2 and Image4. While Image3 represents combination of two defects that are slag inclusion and crack.

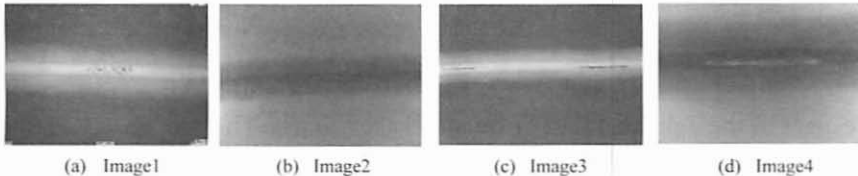


Figure 5: Original Radiographic Images

Figures 6 and 7 present the radiographic image after enhancement using median and average filtering followed by morphological transformations, respectively.

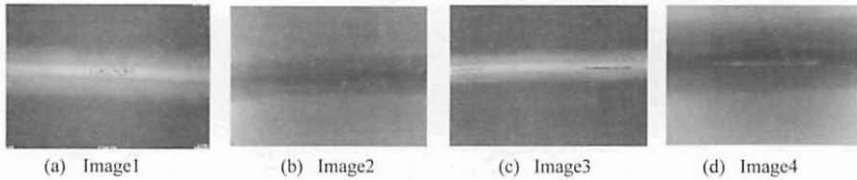


Figure 6: Radiographic Images using Median Filtering

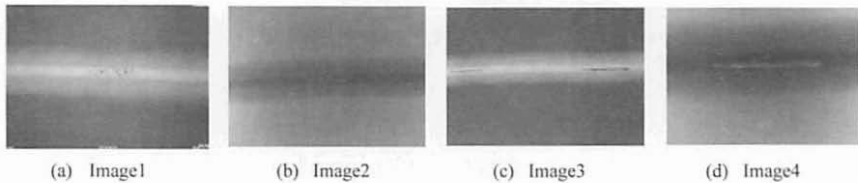


Figure 7: Radiographic Images using Average Filtering

Figure 8 presents the radiographic images after enhancement using the proposed combinatorial smoothing and consequent morphological transformations. It is evident that the defects are more prominent post-enhancement compared to the original images presented in Figure 5.

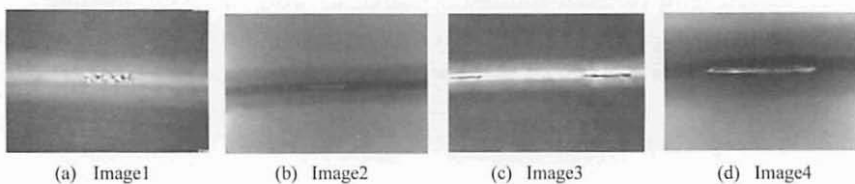


Figure 8: Radiographic Images using Proposed Technique

Table 1 presents the results for SNR, PSNR and MAE analysis with respect to the enhancement of Images 1, 2, 3 and 4. The proposed filtering technique exhibits a decrease in SNR and MAE with respect to the values for median and average filtering. The high PSNR values indicate that the proposed filtering technique produces good quality radiographic images.

Table 1: Image Enhancement Evaluation with respect to SNR, PSNR and MAE Analysis

Image	Quality	Median	Average	Proposed Technique
Image1	SNR (dB)	0.0034	0.0011	0.0011
	PSNR (dB)	28.5980	29.7500	29.4448
	MAE (dB)	2.5110	2.3202	1.9575
Image2	SNR (dB)	0.016	0.0177	0.0149
	PSNR (dB)	32.4167	32.5255	32.8589
	MAE (dB)	2.2907	2.2418	2.0505
Image3	SNR (dB)	0.000142	0.00005	0
	PSNR (dB)	26.4657	26.6161	27.0117
	MAE	1.9433	1.8362	1.5528
Image4	SNR	0.1576	0.1567	0.1549
	PSNR	28.5295	28.6455	28.7806
	MAE	3.3182	3.2618	3.1239

Figure 9 presents comparison of the SNR and MAE values for four enhanced radiographic images using median, average and the proposed filtering techniques; the lower the values the better the image quality.

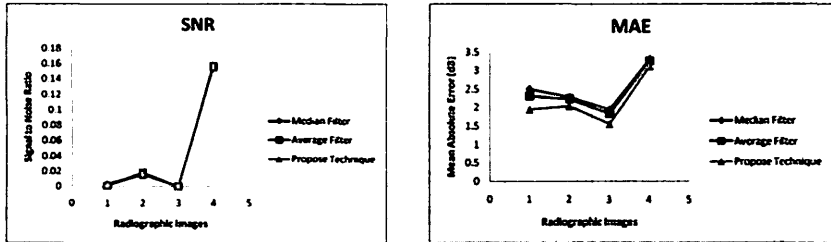


Figure 9: SNR and MAE for the Enhanced Radiographic Images

Figure 10 presents the results for the PSNR analysis for which higher values indicate better image quality.

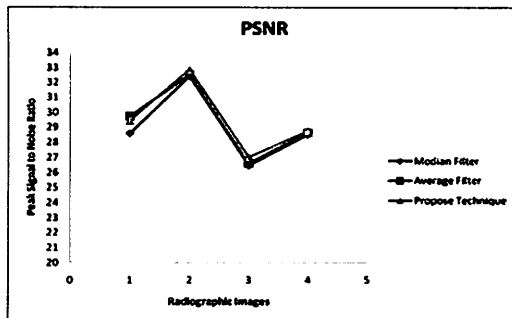


Figure 10: PSNR for the enhanced Radiographic Images

The SNR, MAE and PSNR analyses indicate that the proposed combinatorial filtering technique yields *better* quality radiographic images compared to those acquired using median and average filtering.

Conclusions

The enhancement of radiographic images for the purposes of identifying material defects is of significant importance. The presented work has determined that a combinatorial filtering technique, which incorporates both median and average filtering, yields better quality digital radiographic images than either of the two individual aforementioned filtering techniques with respect to SNR, PSNR and MAE analyses. The implications of this work are greater consistency, reduced subjectivity, reduced analysis time and improved efficiency in the detection and determination of material defects irrespective of the defect size. Future work based upon these findings should focus upon the development of an automated assessment system capable of rapid evaluation of material samples, which would increase efficiency and reduce costs.

Acknowledgement

The authors would like to express their gratitude to Shahidan bin Mohamad in the Advanced Manufacturing Laboratory, Faculty of Mechanical Engineering, Universiti Teknologi MARA Malaysia, Shah Alam for his technical support during the course of this investigation.

References

- [1] R. Vilar, J. Zapata and R. Ruiz, 2009. An Automatic System of Classification of Weld Defects in Radiographic Images, *NDT&E International*, vol. 42, no. 5, pp. 467-476.
- [2] T. W. Liao, 2009. Improving the Accuracy of Computer Aided Radiographic Weld Inspection by Feature Selection, *NDT&E International*, vol. 42, no. 4, pp. 229-239.
- [3] G. J. Christensen, 2004. Why switch to digital radiography?, *The Journal of the American Dental Association*, vol. 135, no. 10, pp. 1437-1439.
- [4] S. Zhonghua and L. Lihong, 2010. Automatic Segmentation of Cracks in X-ray Image based on OTSU and Fuzzy Sets, in *Proceedings of the 3rd International Congress on Image and Signal Processing (CISP)*, pp. 1824-1827.
- [5] X. Wang, B. S. Wong and T. C. Guan, 2004. Image Enhancement for Radiography Inspection, in *Proceedings of the International Conference on Experimental Mechanics*, pp. 462-468.
- [6] S. A. Halim, A. Ibrahim, and Y. H. P. Manurung, 2011. Multiple Smoothing and Morphological Techniques in Radiographic Image Enhancement, in *Proceedings of the 2011 3rd International Conference on Computer Engineering and Technology (ICCET 2011)*, Kuala Lumpur, Malaysia, pp. 97-102.
- [7] Y. I. A. Rejani and S. T. Selvi, 2009. Early Detection of Breast Cancer using SVM Classifier Technique, *International Journal on Computer Science and Engineering (IJCSE)*, vol. 1, no. 3, pp. 127-130.
- [8] X. Xie, Z. Shi, W. Gua and S. Yao, 2009. An Adaptive Image Enhancement Technique Based on Image Characteristic, in *Proceedings of the 2nd International Congress on in Image and Signal Processing (CISP '09)*, Tianjin, China, pp. 1-5.

- [9] J. Zapata, R. Vilar and R. Ruiz, 2010. An Adaptive-Network-Based Fuzzy Inference System for Classification of Welding Defects, *NDT & E International*, vol. 43, no. 3, pp. 191-199.
- [10] A. Aboshosha, M. Hassan, M. Ashour and M. El Mashade, 2009. Image Denoising based on Spatial Filters, An Analytical Study, in *Proceedings of the International Conference in Computer Engineering & Systems (ICCES 2009)*, Cairo, Egypt, pp. 245-250.
- [11] M. C. Nicolae, L. Moraru and L. Onose, 2010. Comparative Approach for Speckle Reduction in Medical Ultrasound Images, *Romanian J. Biophys*, vol. 20, no. 1, pp. 13-21.
- [12] Z. Q. Cai and T. K. M. Lee, 2009. Adaptive Switching Median Filter, in *Proceedings of the 7th International Conference on Information, Communications and Signal Processing (ICICS 2009)*, Singapore, pp. 1-4.
- [13] N. Jamil, Z. A. Bakar and T. M. T. Sembok, 2004. A Comparison of Noise Removal Techniques in Songket Motif Images, in *Proceedings of the International Conference on in Computer Graphics, Imaging and Visualization (CGIV 2004)*, pp. 1-6.
- [14] Y. Wang, D. Liang, H. Ma and Y. Wang, 2006. An Algorithm for Image Denoising based on Mixed Filter, in *Proceedings of the The Sixth World Congress on Intelligent Control and Automation (WCICA 2006)*, Dalian, China, pp. 9690-9693.
- [15] H. Ibrahim, N. S. P. Kong and T. F. Ng, 2008. Simple Adaptive Median Filter for the Removal of Impulse Noise from Highly Corrupted Images, *IEEE Transactions on Consumer Electronics*, vol. 54, pp. 1920-1927.
- [16] N. Nacereddine, M. Zelmat, S. S. Belaïfa and M. Tridi, 2005. Weld defect detection in industrial radiography based digital image processing, *World Academy of Science, Engineering and Technology*, vol. 2, pp. 115-118.

- [17] M. D. Saleh, Herminiawati, H. Mellah and N. D. Salih, 2008. Comparison of Contrast Enhancement Techniques in License Plate Recognition, in *Proceedings of the International Symposium on Information Technology*, Kuala Lumpur, Malaysia, pp. 1-4.
- [18] X. Han, F. Peng, X. Yin and H. Zhao, 2009. An Approach of Adaptive Enhancement of X-ray Welding Image, in *Proceedings of the International Conference on Information Engineering and Computer Science (ICIECS 2009)*, Wuhan, China, pp. 1-4.