



UNIVERSITI TEKNOLOGI MARA

LIFE DETECTOR

AZARUDIN ASRAP

RALIFEE IBRAHIM

REPORT PROJECT 2
FACULTY OF ELECTRICAL ENGINEERING
UNIVERSITI TEKNOLOGI MARA
KAMPUS BUKIT MERTAJAM
PULAU PINANG
2001

ABSTRACT

This project describes of a circuit called 'Human Detector'. Despite its name, actually it can also detect any living being including animals. Like other detectors, it will sound the buzzers and lights the LED if the circuit went off. But, what make it differs from other alarm circuit is that it only requires a person or living being to go touch or even go near the detector plate, will make the circuit run. That, we think is the drawback of this project. In fact, the detector plate is only made from any copper or zinc that can induct electricity. Fortunately, we have combined it with the timer circuit. So, the circuit can run for a period of time.

This circuit consist of a variety of resistors, capacitors, a 9V relay, two 9V batteries, three ICs; a 4001 (Quad 2-input NOR Gate), a 4013 (Dual D flip-flop) and a 555 (Timer IC); a buzzer, a LED and switches. In daily life it can be applied as a house alarm and car alarm.

ACKNOWLEDGEMENT.

In the name of ALLAH s.w.t the most gracious and merciful. Syukur Alhamdulillah, thank to ALLAh s.w.t that give us the energy and also the opportunity to complete this final project, LIVE DETECTOR on the give time although we have some problem to complete it of successfully.

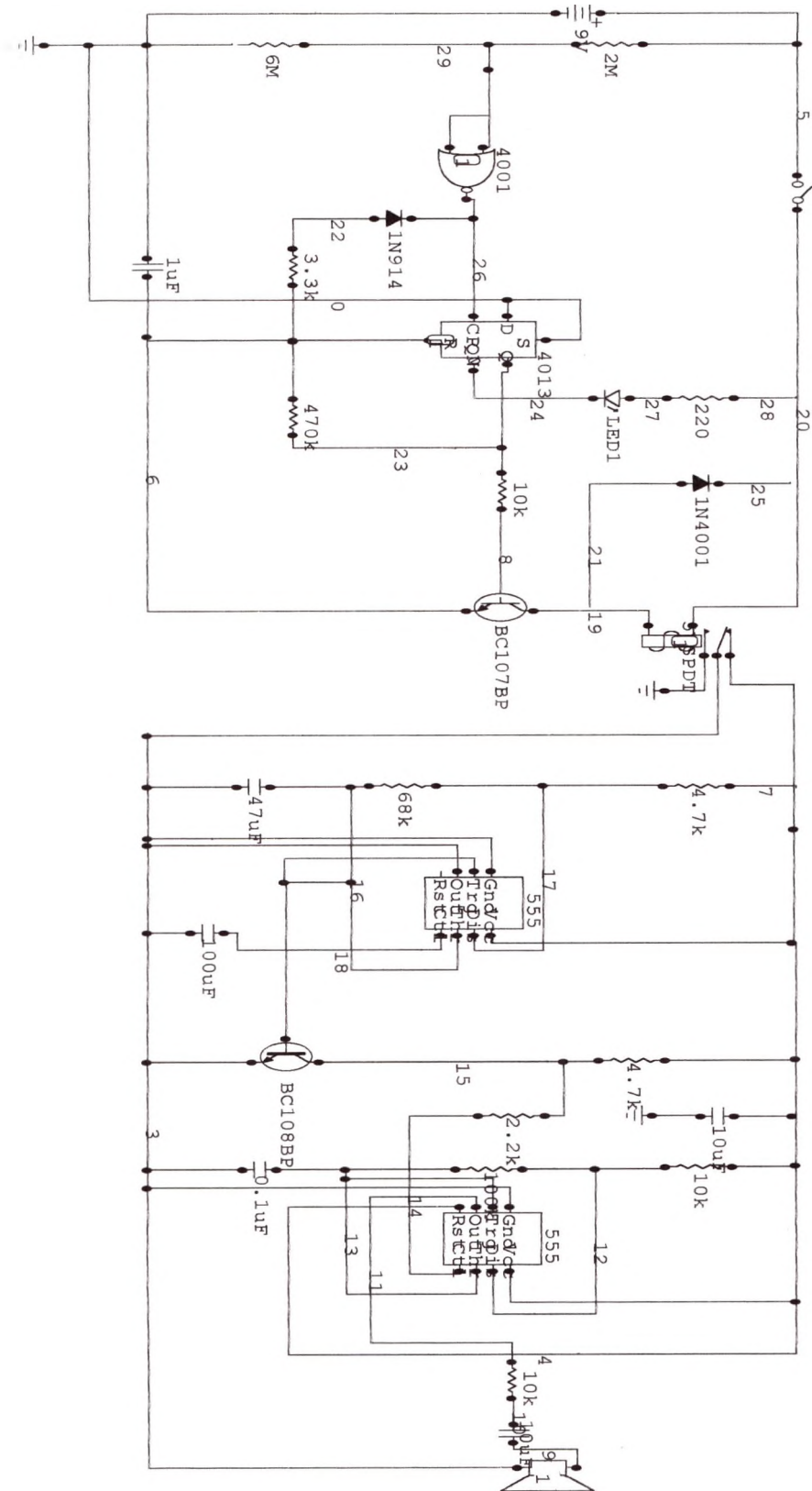
We would like to express our deep sense of gratitude, appreciation and million thanks to our project supervisor, Miss Wan Salha Bt Saidon for her consistent advice, sharing in valuable knowledge and guidance as well as provision of their valuable times, encouragement and patience during the period of completing this project. We would also like to express our greatest grateful to our coordinator department of electrical engineering Pn. Nooritawati Bt Md Tahir for her sincere help and advises.

We are also grateful to all staff members of electrical engineering for their support and technical expertise a special thank to Miss Taniza Bt Tajuddin for her ever-enduring support during the duration of the project.

Thanks also to my project partner for his cooperation and good teamwork. We are very grateful to our supervisor and we will never forget everything especially her cooperation for us and we appreciate it's a lot.

Lastly, very special thanks to our classmate, housemate and all our friends who has help directly or indirectly in making this final year thesis project an interesting and valuable experience. They have all been a constant source of strength and inspiration to us.

CONTENTS	PAGE
ABSTRACT	i
ACKNOWLEDGEMENT	ii
THEORETICAL	
✓ Circuit Operations	2
✓ Components Descriptions	
◆ Dual D type flip-flop	5
◆ 555 Timer IC Circuit	7
◆ Relay	8
◆ Resistor	9
◆ Capacitors	11
◆ Diodes	14
◆ Transistor	18
◆ Light emitting diode	19
LIST OF COMPONENT	20
BUDGET OF PROJECT	21
PROBLEM IDENTIFICATION and TROUBLESHOOTING	22
GANTT CHART	23
CONCLUSION	24
REFERENCES	25
APPENDIXES	26



Circuit Diagram Of Life Detector