

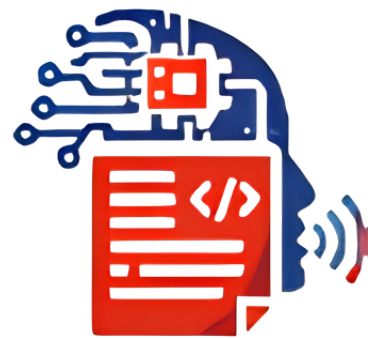
# RedScribe:

## PROTECTING PARTICIPANT VOICES THROUGH PRIVATE AI TRANSCRIPTION

By Mr. Mad Sapri Tumiran (PhD Candidate at Faculty of Pharmacy, UiTM)

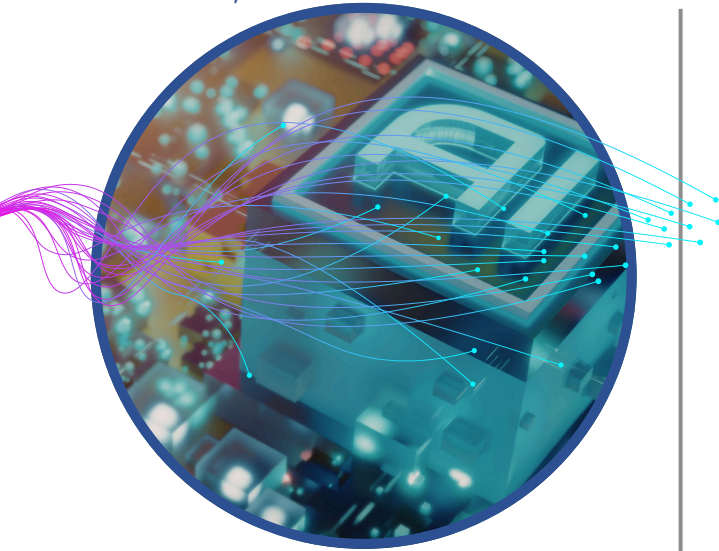


In qualitative research, interviews are one of the most important methods for understanding human experiences, perceptions, and real-world practices. Through interviews, participants share their voices, stories, and personal reflections in their own words. However, managing interview data is not always straightforward. Researchers often face major challenges in protecting participant privacy, handling sensitive audio recordings, and converting long interview sessions into accurate written transcripts.



### AI Transcription System

an artificial intelligence-based transcription system designed to help researchers manage interview data in a more efficient, structured, and secure manner



## The Power of RedScribe

This challenge led to the development of RedScribe, an artificial intelligence-based transcription system designed to help researchers manage interview data in a more efficient, structured, and secure manner. At its core, RedScribe is guided by the principle of intelligent local transcription for secure research analytics. This means that interview recordings are processed locally, research data remains under the researcher's control, and the transcription output can be used to support secure and structured qualitative analysis.



Unlike many commercial transcription platforms that require users to upload audio files to external servers, RedScribe runs locally on the researcher's own computer. This keeps interview recordings, participant voices, and research data within the researcher's control. For studies involving human participants and require ethics approval, this is important to protect confidentiality and ensure that data is used only for the approved research purpose. It also reduces risks related to third-party storage, possible data retention, artificial intelligence (AI) model training, or data exposure if an external platform is breached.

## Interview Challenging



Protecting participant privacy



Handling sensitive audio recordings



Engage with your niche

## AI Audio-to-Text Converter

Technically, RedScribe uses automatic speech recognition technology powered by AI models such as Whisper to convert audio into text. It is also designed with a user-friendly interface, allowing researchers to select audio files, run transcription, review the output, and export reports without requiring advanced programming skills. This makes the system especially useful for postgraduate students and researchers who need practical digital tools to support their research workflow.



## Reporting Structure

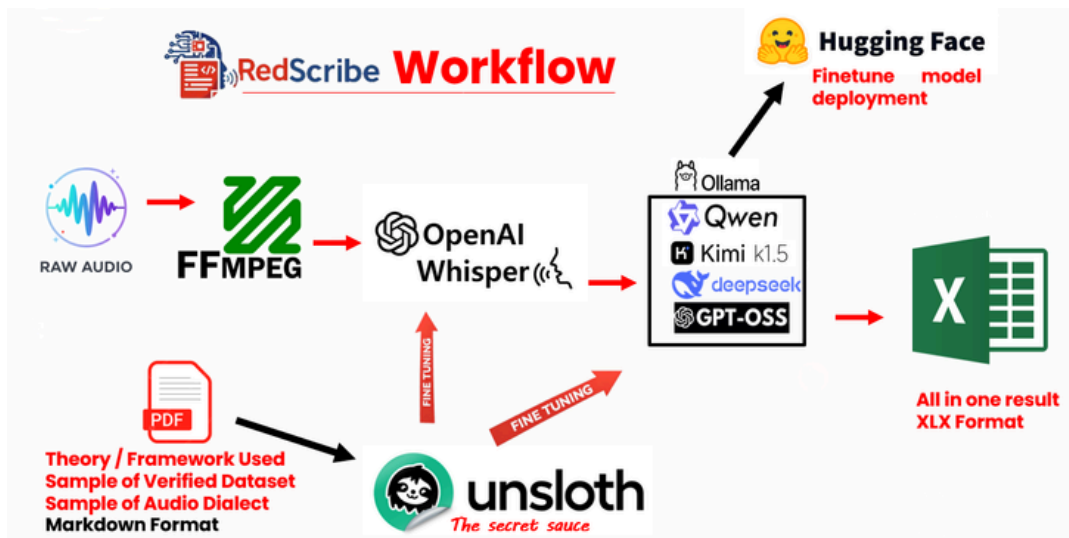
Beyond transcription, RedScribe also provides an early reporting structure to help researchers organise study information. The report may include the project title, researcher name, interview label, audio duration, language, processing model, processing time, number of speech segments, total word count, and estimated speech and silence distribution. The output can be exported into Excel format, making it easier for researchers to conduct manual verification, correction, audit trail preparation, and further analysis.

---

## AI Transcription with Human Insight



One of RedScribe's key strengths is that it does not view transcription as a purely technical process. Instead, it positions transcription as part of the wider qualitative research workflow. The generated transcript is not treated as a final product, but as a first draft that still requires researchers' verification. This is important because qualitative research depends not only on words, but also on context, meaning, and interpretation. Human judgment remains essential, especially when dealing with local expressions, mixed-language conversations, cultural references, and sensitive participant narratives.



RedScribe CUDA-enabled workflow for local transcription and analysis.

## RedScribe in Pharmacy Research

For pharmacy researchers, RedScribe has wide potential applications. It can be used in patient interview studies, medication adherence research, exploration of healthcare experiences, community perception studies, pharmacy practice research, and health policy studies. In an academic environment that increasingly values patient-centred care and real-world evidence, the ability to capture participant voices efficiently and systematically is a major advantage.

RedScribe also reflects an important shift in academic innovation. Researchers are no longer only users of technology, but can also become developers of tools tailored to their own research needs. Many international software platforms are built for global markets, but they may not fully address local research challenges such as mixed-language interviews, limited research budgets, privacy concerns, and specific academic reporting requirements. With RedScribe, technology development is closely connected to pharmacy research and the real problems faced during the research process.

In addition to its research function, RedScribe has also been recognised as an intellectual property through Malaysia's Copyright system under the Copyright Act 1987. Registered under the title "RedScribe: Intelligent Local Transcription for Secure Research Analytics", with the notification number CRDV2026W02110, this copyright notification reflects the originality, academic value, and innovation potential of RedScribe as a locally developed research support tool. RedScribe also gained further recognition when it was presented at the Idea/Product Pitching session of the Innovation Congress (ICON) & International Research Conference on Pharmaceutical and Allied Sciences (IRCPAS 3.0), where it successfully progressed to the final round and won the Silver Award. This achievement marks an important milestone in RedScribe's journey from a PhD research support tool to a recognised innovation in qualitative research and secure AI-assisted transcription.

## Innovation Through Simplicity

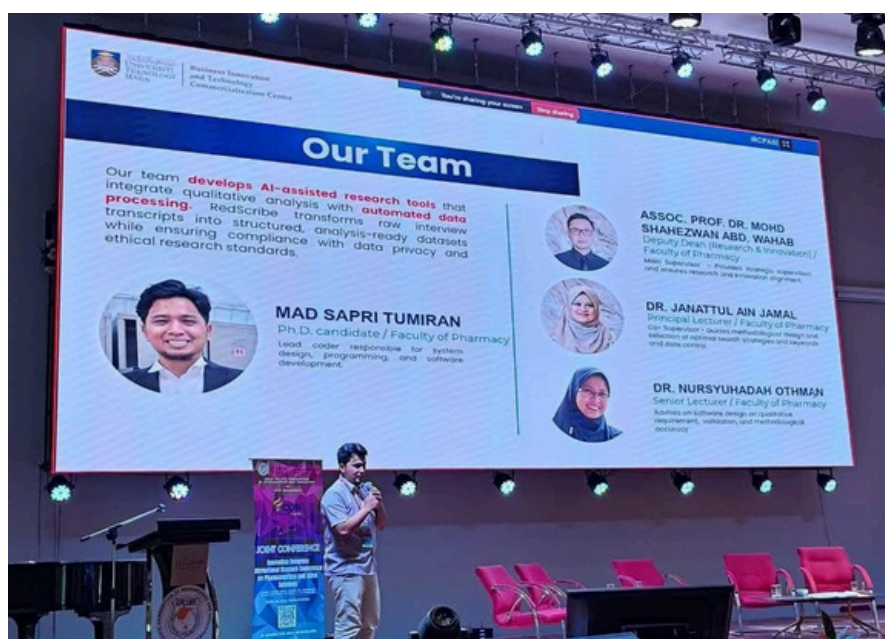
The journey of developing RedScribe carries an important message for the faculty community. Innovation does not always begin with a large laboratory, major funding, or a big technical team. Sometimes, innovation begins with a repeated problem, a tiring manual task, and a simple question:

*“Can this process be improved?”*



## Future Improvements

RedScribe still has room to grow. Future improvements may include better multilingual support, integration with local AI models, automated speaker identification, interview summarization, early theme suggestion, and mapping of transcript data to specific research frameworks. However, its foundation remains clear: participant data must be protected, research ethics must be respected, and AI must assist, not replace, the researcher. Ultimately, RedScribe is more than a transcription tool. It is a small but meaningful step towards building a smarter, more organized, and more researcher-friendly research ecosystem.



**Team RedScribe during the presentation of RedScribe: AI Transcription at ICON & IRCPAS 3.0, held at UCSI University, showcasing a locally developed innovation to support secure qualitative research.**