



UNIVERSITI
TEKNOLOGI
MARA

Fakulti
Kejuruteraan Awam

ANNUAL REPORT 2025

FACULTY OF CIVIL ENGINEERING
UNIVERSITI TEKNOLOGI MARA





16 PEACE, JUSTICE AND STRONG INSTITUTIONS



PEACE, JUSTICE, AND STRONG INSTITUTIONS: WHY THEY MATTER

WHAT'S THE GOAL HERE?

To foster a faculty culture rooted in integrity, transparency, fairness, and mutual respect in all academic and professional matters.

TEACHING & LEARNING

Goal: To develop graduates who understand the importance of ethics, responsibility, and professional conduct in engineering practice.



Key contributions

- Reinforce academic honesty and ethical behaviour in coursework and assessments.
- Encourage respectful discussion, teamwork, and professionalism in learning activities.
- Include elements of professional ethics and responsibility in engineering education.
- Help students appreciate how engineering decisions can affect society and public trust.
- Three courses under SDG 16: Law Engineering Practice (Elective) and Final Year Project I & II.

FCE
 upholds
 transparent
 academic and
 administrative
 practices to
 ensure
 fairness,
 integrity and
 accountability

RESEARCH & PUBLICATION

Goal: To ensure research practices are responsible, transparent, and beneficial to society.

Key contributions

- Uphold ethical standards in conducting, reporting, and publishing research.
- Encourage research that addresses societal needs and promotes public wellbeing.
- Practise transparency and accountability in authorship and data management.
- Build collaborations that strengthen a culture of responsible scholarship.

OPERATION

Goal: To maintain fair, transparent, and well-managed processes in faculty academic and administrative matters.

Key contributions

- Follow clear and consistent procedures in decision-making and faculty operations.
- Ensure fairness and equal treatment in matters involving students and staff.
- Promote a safe, respectful, and professional working and learning environment.
- Encourage open communication and responsible behaviour within the faculty community.

COMMUNITY OUTREACH

Goal: To promote responsibility, trust, and safety through community engagement and professional conduct.

Key contributions

- Support outreach efforts that raise awareness about safety, responsibility, and ethical practices.
- Share engineering knowledge that contributes to safer and more reliable community environments.
- Work with partners on initiatives that strengthen community wellbeing and trust.
- Encourage staff and students to represent the profession with integrity.

Sanjungan Budi Lambaian Kasih: Kepimpinan Melalui Tauladan

The program aligns with the objectives of SDG 16, particularly in its focus on developing effective, inclusive, and accountable leadership within student organizations.

The aimed to strengthen student representative institutions, such as the Student Representative Council (MPP) by creating a structured environment for sharing leadership and activity management experiences

STUDENT INITIATIVES

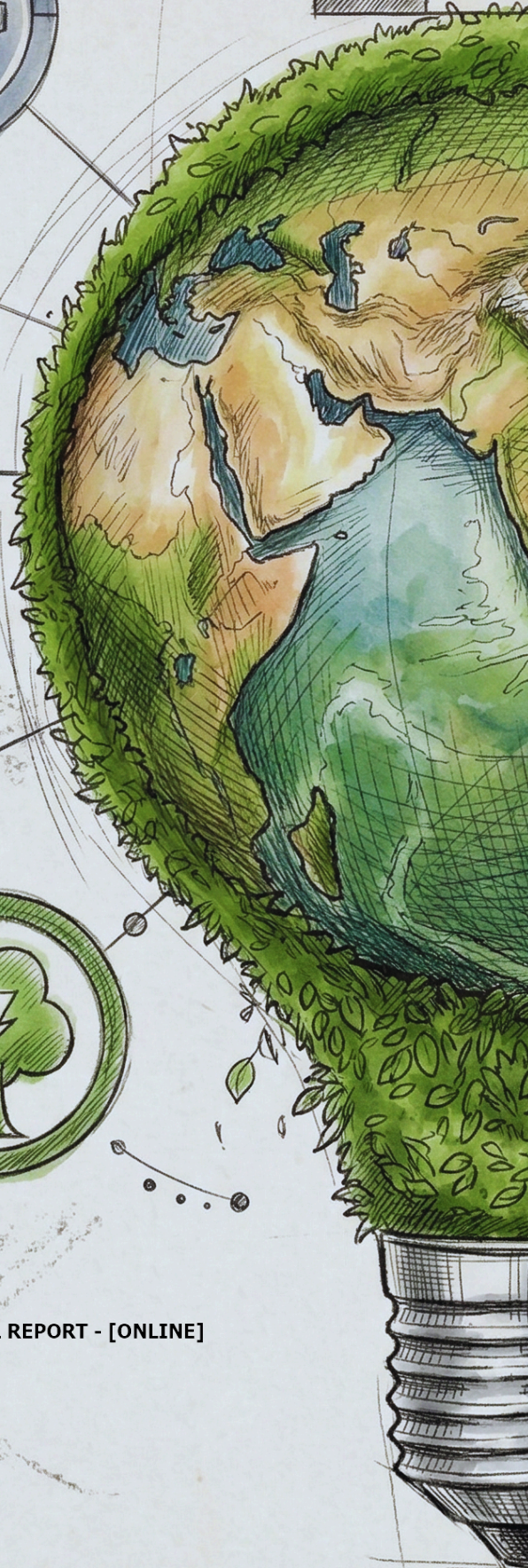
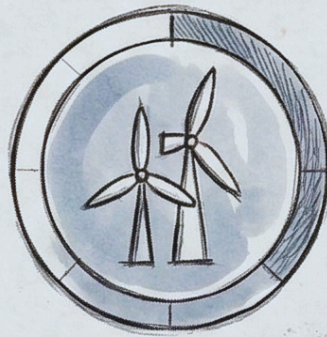
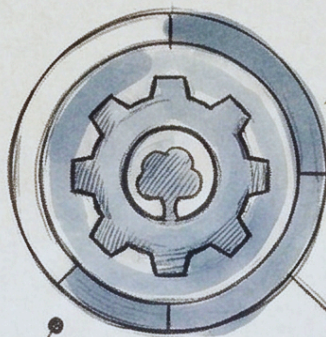
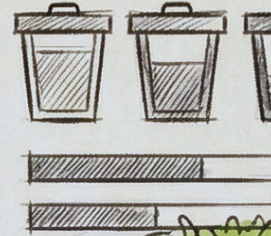
Goal: To nurture student leadership that reflects integrity, accountability, and respect for others.

Key contributions

- Encourage student leaders to manage activities responsibly and transparently.
- Promote teamwork, inclusivity, and respectful interaction in student organisations.
- Support peer initiatives that build a positive and ethical student culture.
- Inspire students to practise integrity in both academic and extracurricular activities such as Program Ekspo Kelab Dalaman dan Persatuan Fakulti Kejuruteraan Awam 2025.



SUSTAINABLE DEVELOPMENT GOALS



JUDUL : SUSTAINABLE DEVELOPMENT GOALS ANNUAL REPORT - [ONLINE]

eISSN : 3093-8104

eISSN 3093-8104



9 773093 810009