



UNIVERSITI  
TEKNOLOGI  
MARA

Fakulti  
Kejuruteraan Awam

# ANNUAL REPORT 2025

FACULTY OF CIVIL ENGINEERING  
UNIVERSITI TEKNOLOGI MARA





**5 GENDER EQUALITY**



# GENDER EQUALITY: WHY IT MATTERS

## WHAT'S THE GOAL HERE?

To promote equal opportunities, respectful environments, and inclusive participation for all genders in education, leadership, and professional development.

## TEACHING & LEARNING

**Goal:** To deliver high-quality, inclusive, and industry-relevant education that supports student success and lifelong learning.

### Key contributions

- Promote equal participation in classroom, projects, and academic activities.

- Ensure fair assessment and equal access to learning opportunities.
- Integrate discussions on ethics, professionalism, and respect in learning activities.
- Encourage female participation in engineering fields through academic support and mentoring.



**In 2025,  
women  
held  
71 %  
of  
managerial  
positions  
in Faculty of  
Civil  
Engineering**

## RESEARCH & PUBLICATION

Goal: To support research and scholarly work that promotes inclusivity and gender equity in engineering and society.

### Key contributions

- Conduct research addressing diversity, inclusivity, and social sustainability.
- Encourage equal research opportunities and leadership roles among staff and students.
- Publish studies related to inclusive environments and equitable development.
- Collaborate with partners who promote diversity and equal participation in engineering.

## OPERATION

Goal: To maintain a respectful, safe, and inclusive environment that supports wellbeing and equal treatment for all.

### Key contributions

- Encourage balanced participation in faculty committees, programmes, and leadership roles.
- Provide equal access to facilities and opportunities within the faculty.
- Support staff and students through welfare initiatives regardless of gender.

## COMMUNITY OUTREACH

Goal: To promote awareness of inclusivity and equal opportunity through community engagement and educational outreach.

### Key contributions

- Support outreach programmes encouraging girls and young women to pursue STEM fields.
- Participate in community awareness activities related to education and empowerment.
- Collaborate with schools and organisations to promote equal access to engineering education.
- Encourage staff and students to volunteer in empowerment-related initiatives.

## STUDENT INITIATIVES

Goal: To empower students to promote respect, inclusivity, and equal participation in academic and community activities.

### Key contributions

- Encourage leadership opportunities for all genders in student organisations (eg: Sekretariat Mahasiswa FKA (SMFKA), PERKA, Civil Outdoor Club (COC)).
- Support peer mentoring and empowerment initiatives.



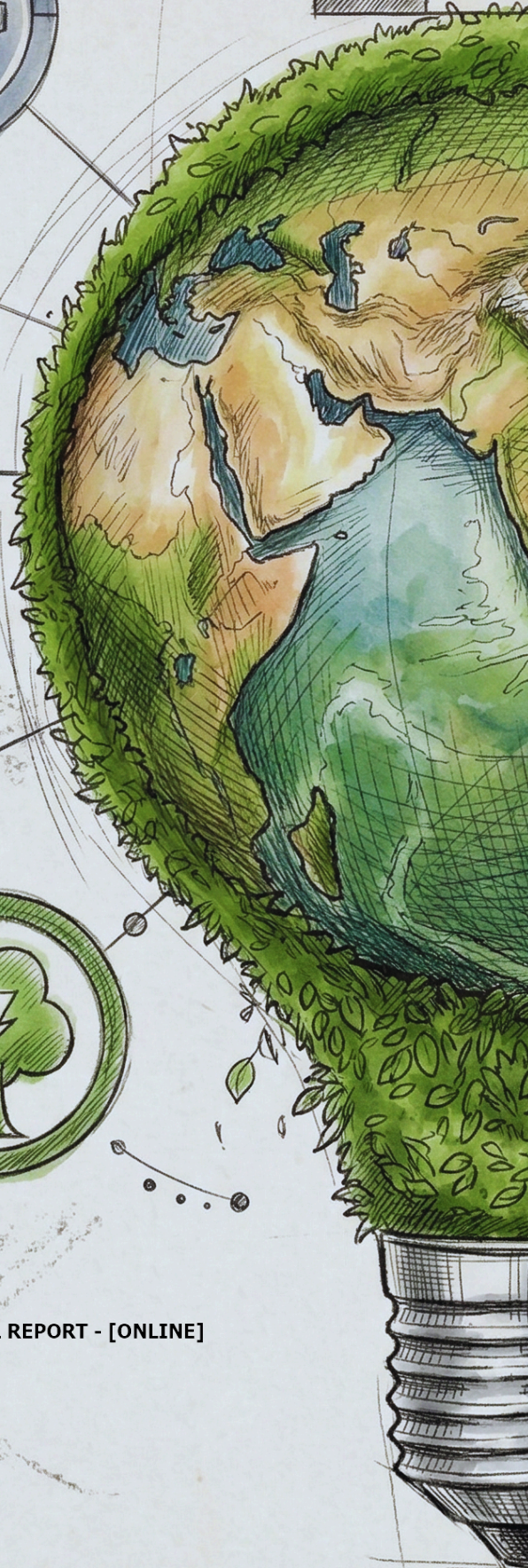
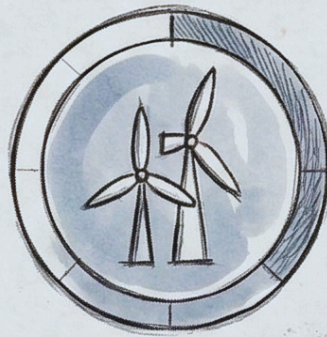
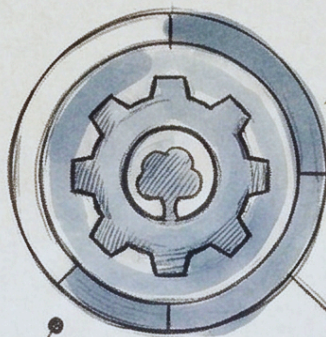
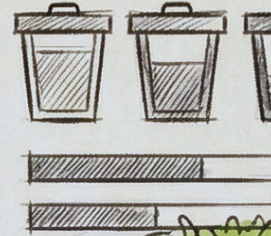
At the Faculty of Civil Engineering, gender equality is strengthened through inclusive and supportive leadership under the guidance of the Dean, Prof. Ir. Ts. Dr. Che Khairil Izam Che Ibrahim.

The faculty is committed to creating an academic and professional environment where opportunities, responsibilities, and recognition are accessible to all, regardless of gender. Policies, academic practices, and leadership roles are guided by fairness, respect, and mutual support.

By fostering a culture of inclusivity, FCE ensures that both women and men can grow confidently, contribute effectively, and take on leadership roles in education, research, and professional development.



**SUSTAINABLE DEVELOPMENT GOALS**



JUDUL : SUSTAINABLE DEVELOPMENT GOALS ANNUAL REPORT - [ONLINE]

eISSN : 3093-8104

eISSN 3093-8104



9 773093 810009