



UNIVERSITI
TEKNOLOGI
MARA

Fakulti
Kejuruteraan Awam

ANNUAL REPORT 2025

FACULTY OF CIVIL ENGINEERING
UNIVERSITI TEKNOLOGI MARA





3 GOOD HEALTH AND WELL-BEING



FCE remains committed to supporting student wellbeing beyond campus through care and welfare initiatives

GOOD HEALTH & WELL-BEING: WHY IT MATTERS

WHAT'S THE GOAL HERE?

To promote physical, mental, and emotional wellbeing among students and staff, ensuring a supportive and caring academic environment.

TEACHING & LEARNING

Goal: To support student wellbeing and health awareness through inclusive teaching practices and a supportive learning environment.

Key contributions

- Provide a supportive and understanding learning environment for students facing health challenges.
- Provide academic flexibility and guidance for students facing medical or personal difficulties, including arrangements to sit examinations in a dedicated room when health conditions require special consideration.
- Integrate safety, health, and wellbeing awareness into relevant coursework (eg: Construction Safety and Health Management, ECM572).

RESEARCH & PUBLICATION

Goal: To advance research that improves safety, health, and wellbeing in the built environment and communities.

Key contributions

- Conduct research related to safety, risk reduction, and healthy built environments (eg: Enhancing Traffic Safety For School Children Through VR360 Development and Safe Schools Initiatives with A Holistic Framework).



- Collaborate with industry and conduct consultancy project addressing community wellbeing and safety management such as Vision Zero Community: Road Safety Intervention lead by Dr Elmi Alif Azmi.



OPERATION

Goal: To ensure students receive timely welfare and health-related support during times of illness, hardship, or personal difficulty.

Key contributions

- Conduct welfare visits to support students during illness.
- Provide emergency and compassionate assistance for students facing medical or personal crises.
- Offer guidance and referral to relevant university support services when needed.
- Maintain regular welfare monitoring to ensure students' wellbeing is safeguarded.



COMMUNITY OUTREACH

Goal: To promote health, safety, and wellbeing awareness among communities through engagement and knowledge sharing.

Key contributions

- Organise community programmes related to safety, risk awareness, and healthy environments.
- Share practical knowledge on safe living practices and environmental health.
- Collaborate with partners on initiatives that enhance community safety and wellbeing.

STUDENT INITIATIVES

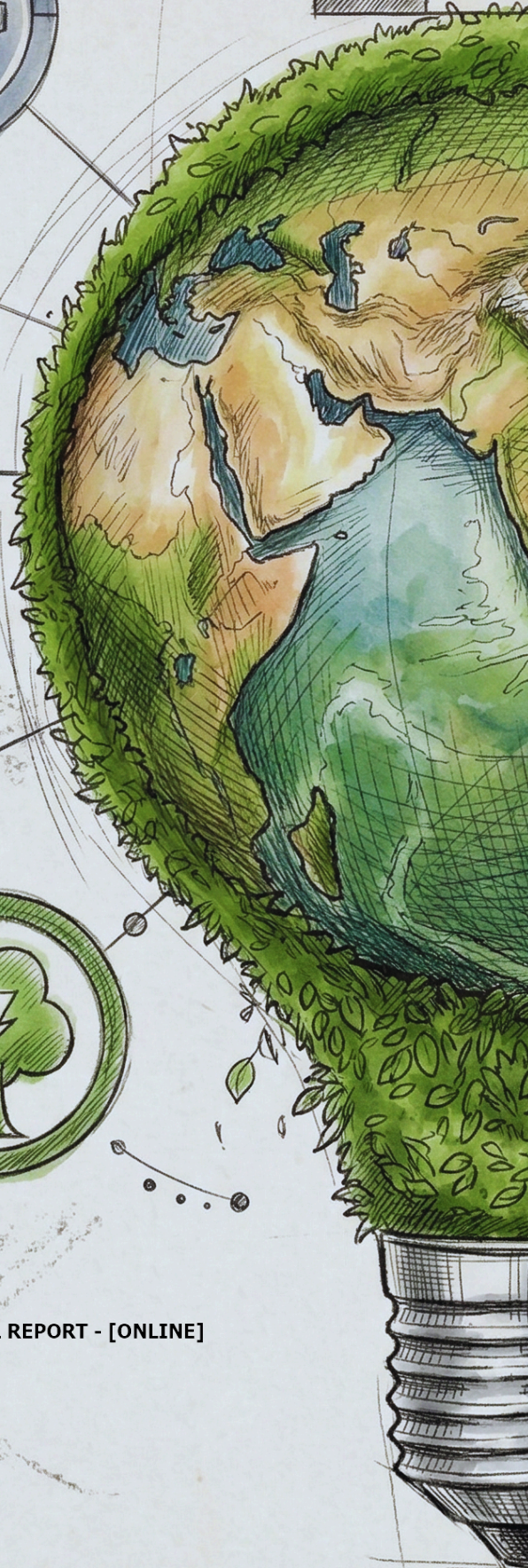
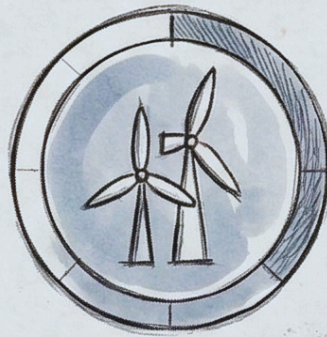
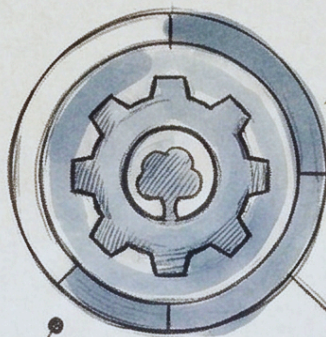
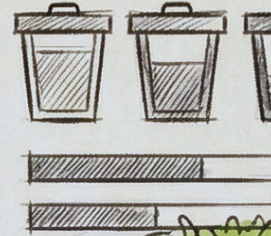
Goal: To empower students to lead and participate in initiatives that promote peer wellbeing and community health.

Key contributions

- Organise student-led welfare and peer support programmes such as Health is Wealth. Pusat Psikologi dan Kaunseling provided services to test Depression and anxiety screening tests (Ujian Saringan Depresi dan Kemurungan) and Psychology games.



SUSTAINABLE DEVELOPMENT GOALS



JUDUL : SUSTAINABLE DEVELOPMENT GOALS ANNUAL REPORT - [ONLINE]

eISSN : 3093-8104

eISSN 3093-8104



9 773093 810009