

Academy of Language Studies  
UiTM Cawangan Pulau Pinang

# e-Lingua

APRIL 2026

1/2026

*Connecting Cultures  
One Word at a Time*

你好

Apa Khabar?

Bonjour

Hello

مرحبًا

Hallo

こんにちは

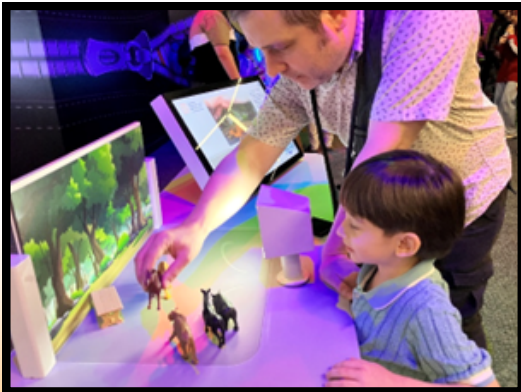


# Kids' Educational places to visit in Kuala Lumpur

NORAZIAH MOHD AMIN  
ACADEMY OF LANGUAGE STUDIES, UITM CAWANGAN PULAU PINANG

## *Petrosains*

Petrosains, The Discovery Centre is an interactive science and technology museum located on Level 4 of Suria KLCC in the Petronas Twin Towers, Kuala Lumpur, Malaysia. It's designed to make science engaging and exciting for children and families by blending hands-on exhibits, interactive activities, and immersive learning experiences that bring scientific concepts to life.



For kids, Petrosains is both fun and educational. They can explore interactive zones that cover topics like energy, space, molecules, and technology, with exhibits that encourage playful experimentation and discovery. Young visitors might climb aboard a dark ride through science worlds, test their skills on F1 racing simulators, interact with robots in the Tech Lab, or learn about dinosaurs and the natural world. Other highlights include interactive play stations, space-themed exhibits, and hands-on science experiments that develop curiosity and understanding of STEM (science, technology, engineering, and mathematics) principles.

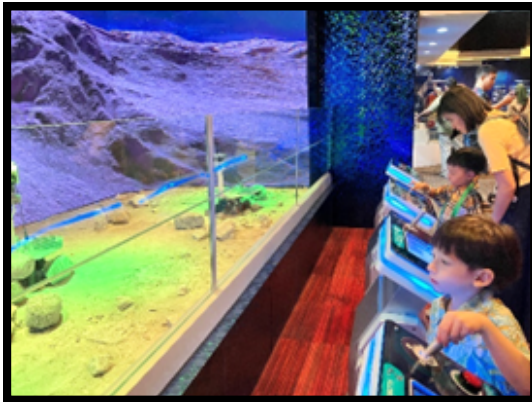
Throughout the centre, children can touch, play, and interact with displays that explain scientific ideas in accessible ways, from the forces behind motion and speed to the science of energy and the Earth's processes. Many exhibits invite kids to press buttons, adjust levers, conduct simple experiments, and explore themed challenges that make learning through play enjoyable and memorable. Overall, Petrosains offers a stimulating environment where children can laugh, learn, and discover how science and technology shape the world around them.



## ***Pusat Sains Negara (PSN)***

**Pusat Sains Negara (PSN) is Malaysia's official National Science Centre, operated under the Ministry of Science, Technology and Innovation (MOSTI). The main centre is located at Persiaran Bukit Kiara, Kuala Lumpur. There is also a regional branch called Pusat Sains Negara Cawangan Wilayah Utara in Kedah.**

**Established under the Ministry of Science, Technology and Innovation (MOSTI), PSN aims to promote public understanding of science, technology, and innovation through interactive and educational experiences designed for learners of all ages, particularly children.**



**For children, PSN offers a wide range of hands-on and exploratory learning opportunities. Young visitors can engage with interactive**

**galleries that introduce core scientific concepts in physics, biology, chemistry, environmental science, and technology. Through simple experiments, demonstrations, and playful challenges, children learn how scientific principles apply to everyday life, such as how forces work, how the human body functions, and how technology shapes modern society.**

**For children, PSN offers a wide range of hands-on and exploratory learning opportunities. Young visitors can engage with interactive galleries that introduce core scientific concepts in physics, biology, chemistry, environmental science, and technology. Through simple experiments, demonstrations, and playful challenges, children learn how scientific principles apply to everyday life, such as how forces work, how the human body functions, and how technology shapes modern society.**

**PSN also features themed exhibition spaces, activity zones, and live science demonstrations that encourage inquiry and critical thinking. Children are invited to observe, touch, and experiment, making learning active rather than passive. These activities help develop problem-solving skills, creativity, and curiosity while fostering an early interest in STEM (science, technology, engineering, and mathematics).**

**Overall, Pusat Sains Negara provides an engaging environment where children can learn by doing, explore scientific ideas in an enjoyable way, and gain a deeper appreciation of science as part of their daily lives.**

## *Planetarium Negara*

**Planetarium Negara (the National Planetarium of Malaysia) is a science education centre focused on astronomy and space science, located at 53 Jalan Perdana, Tasik Perdana, Kuala Lumpur. It's easily recognisable by its distinctive blue dome and serves as a key public facility for learning about the universe and celestial phenomena**

**Planetarium Negara is Malaysia's national centre for astronomy and space science education. It is located at Jalan Perdana, Tasik Perdana (Lake Gardens), Kuala Lumpur, and is well known for its iconic blue dome. The planetarium is designed to introduce the public, especially children to the wonders of space, the universe, and scientific exploration in an engaging and accessible way.**



For children, Planetarium Negara offers many exciting learning experiences. One of the main highlights is the Space Theatre, where kids can watch immersive dome shows about planets, stars, galaxies, astronauts, and space missions. These shows help children visualise complex space concepts in a fun and easy-to-understand manner.

Inside the exhibition galleries, children can explore displays on astronomy, space technology, satellites, and the solar system. They can learn how rockets work, how astronauts live in space, and how Malaysia has contributed to space science. Interactive exhibits and models encourage children to observe, ask questions, and connect what they see with real scientific ideas.

Outside the building, children can explore astronomy-themed outdoor exhibits, including replicas of ancient observatories and large-scale models related to space observation. Overall, Planetarium Negara provides a stimulating environment where children can develop curiosity, scientific thinking, and a sense of wonder about the universe.

# The Team



**Prof. Ir. Dr. Hj. Ahmad  
Rashidy Razali**  
Rector



**Dr. Norhaslinda Hassan**  
Head of Center / Adviser



**Wan Noorli Razali**  
Chief Editor



**Aini Syahira Binti  
Jamaluddin**



**Muhammad Aiman  
Abdul Halim**



**Ummu Habibah Binti  
Mohd Sakri @ Shukri**



**Nur Fatin Nabila  
Abdul Rahman**



**Nur Fatin Shahmina  
Mohd Fauzey**



**Fasyin Diyana  
Mohamad Fadzil**



**Nur Aalia Arifin**



**Nurul Farzanah  
Mohd Rosli**



**Noraziah Mohd Amin**



**Seng Hui Zanne**



**Lim Teck Heng**